

*C. U. Athletics -  
football program*

C. U. ARCHIVES

CLEMSON COLLEGE LIBRARY  
BROWSING ROOM

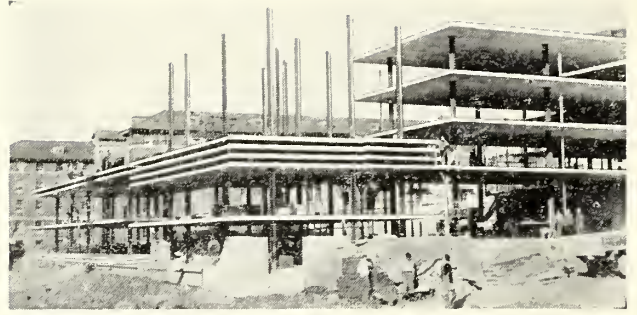
# Clemson Furman

*Homecoming*

*20th Year*

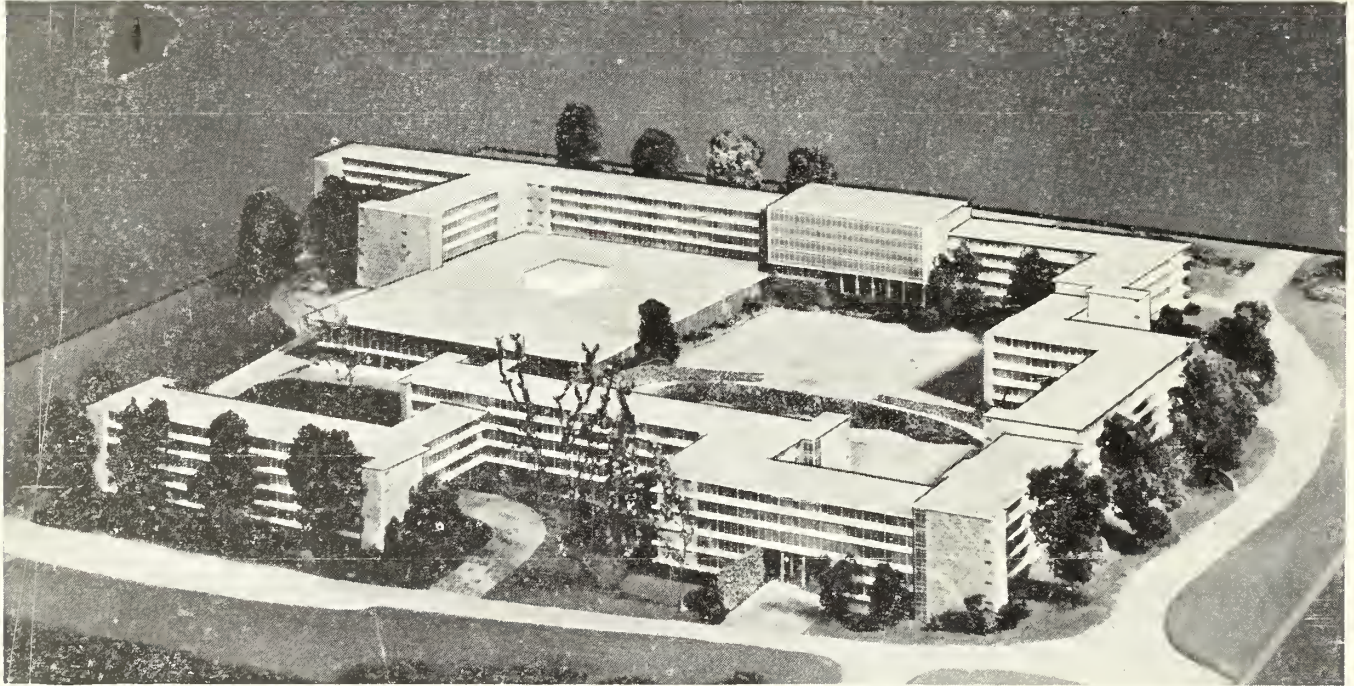






**LIFT SLAB GOES TO COLLEGE  
TO BUILD FOR TEXTILE EDUCATION**

*In The South*



ARCHITECTS: LYLES, BISSETT, CARLISLE & WOLFF

A 520,000 square foot Student Dormitory built in record time at Clemson College, in South Carolina, is another part of the South's continuing program of building education and research facilities.

This revolution in building utilized the slabs for floors of the dormitory after lifting them to their appointed height. No framework of steel was needed—time and money were saved from the start.

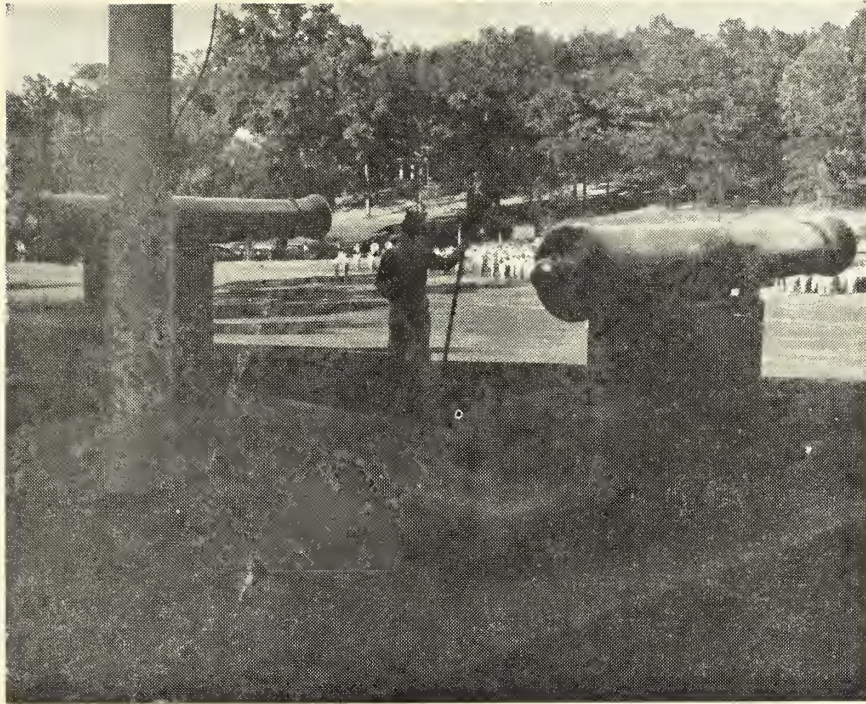
But more than a revolutionary building is underway at Clemson—a growing center of textile education is making it more attractive than ever for firms in any branch of the textile industry to select the South for their home for profits both today and tomorrow.

*Builders in and of the South*

**DANIEL CONSTRUCTION COMPANY, INC.**  
**GREENVILLE, SOUTH CAROLINA      BIRMINGHAM, ALABAMA**







---

# Official Program

Published By  
CLEMSON COLLEGE ATHLETIC ASSOCIATION

Edited By BRENT BREEDIN  
Director of Sports Publicity

---

## CONCESSION STANDS

Concession stands are located immediately behind the top row of seats on either side of the playing field. The stands handle soft drinks, sandwiches, popcorn, peanuts, candy, etc. Vendors will sell these items from the aisles, also.



## EMERGENCIES

In an emergency of any nature, come to the back of the pressbox. Please remember however, that since important business is being conducted within the pressbox, only cases of strict emergency can be given consideration. Telephone is located in information booth.

## RESTROOMS

Ladies' restrooms are located on both sides of the stadium on the east end. Men's restrooms are located on both sides of the stadium on the West end.



## IN LEAVING

In leaving the stadium, please give utmost heed to the directions from the officers controlling traffic. Every care has been taken to move cars from the college campus in the most efficient manner and cooperation from drivers will speed up the process considerably.



In COLUMBIA, S. C. Stay at Hotel

# Wade Hampton

An atmosphere of the most modern appointments and quick, efficient service mellowed by easy Southern Hospitality, puts Hotel Wade Hampton out front as a model of hotel perfection. Completely air-conditioned, offering distinctive accommodations, serving the ultimate in fine foods, specializing in cordial hospitality, Hotel Wade Hampton is truly the Hotel of tomorrow . . . here for your enjoyment today.

THOMAS JEFFERSON  
Birmingham, ALA.



ADMIRAL SEMMES  
Mobile, ALA.



WASHINGTON  
Washington, D. C.



MONTICELLO  
Norfolk, VA.



MOUNTAIN LAKE  
Mountain Lake, VA.



CLAYPOOL  
Indianapolis, IND.



PAXTON  
Omaha, NEB.



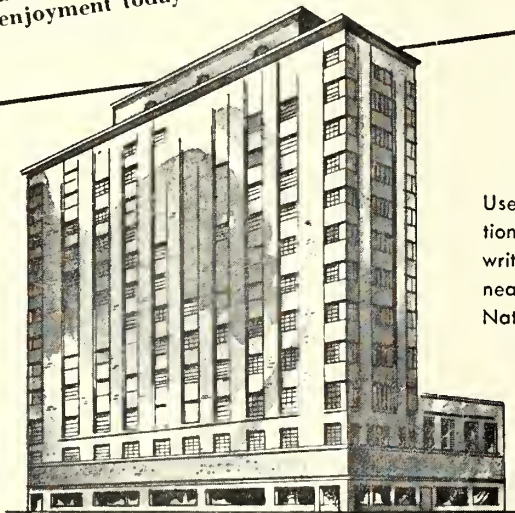
BAKER  
Dallas, TEX.



JUNG  
New Orleans, LA.



Carry a Universal Credit Card! It is convenient and often saves embarrassment. Address applications to: Credit Dept., The National Hotel Company, Anico Bldg., Galveston, Texas.



Use our reservation service! Call, write, or wire your nearest Affiliated National Hotel.

## AFFILIATED NATIONAL HOTELS

ALABAMA		TEXAS	
HOTEL ADMIRAL SEMMES . . . . .	Mobile	HOTEL STEPHEN F. AUSTIN . . . . .	Austin
HOTEL THOMAS JEFFERSON . . . . .	Birmingham	HOTEL EDSON . . . . .	Brownwood
DISTRICT OF COLUMBIA		HOTEL BROWNWOOD . . . . .	Dallas
HOTEL WASHINGTON . . . . .	Washington	HOTEL TRAVIS . . . . .	Dallas
INDIANA		HOTEL CORTEZ . . . . .	El Paso
HOTEL CLAYPOOL . . . . .	Indianapolis	HOTEL TEXAS . . . . .	Fort Worth
LOUISIANA		HOTEL BUCCANEER . . . . .	Galveston
JUNG HOTEL . . . . .	New Orleans	HOTEL GALVEZ . . . . .	Galveston
HOTEL DESOTO . . . . .	New Orleans	HOTEL JEAN LAFFITTE . . . . .	Galveston
NEBRASKA		CORONADO COURTS . . . . .	Galveston
HOTEL PAXTON . . . . .	Omaha	JACK TAR COURT HOTEL . . . . .	Galveston
NEW MEXICO		MIRAMAR COURT . . . . .	Galveston
HOTEL CLOVIS . . . . .	Clavis	HOTEL CAVALIER . . . . .	Galveston
OKLAHOMA		HOTEL PLAZA . . . . .	Laredo
HOTEL ALDRIDGE . . . . .	Wewake	HOTEL LUBBOCK . . . . .	Lubbock
SOUTH CAROLINA		HOTEL FALLS . . . . .	Marlin
HOTEL WADE HAMPTON . . . . .	Columbia	HOTEL CACTUS . . . . .	San Angelo
		HOTEL MENGER . . . . .	San Antonio
		ANGELES COURTS . . . . .	San Antonio
		VIRGINIA	
		HOTEL MOUNTAIN LAKE . . . . .	Mountain Lake
		HOTEL MONTICELLO . . . . .	Norfolk



J. CAREY

AFFILIATED NATIONAL HOTELS



## ***The NEW Clemson***

Those persons who have not been on the Clemson campus in several years are in for a shock when they make their current tour of the College. The real old timer won't recognize much more than the tower of the main building and John C. Calhoun's mansion, while visitors of as recently as five years ago will also find countless evidences at every turn of "a new Clemson."

Though almost everyone today thinks of construction at Clemson in terms of the new dormitories and the agricultural group, this rather phenomenal growth started back in 1950 with the building of the new steam plant without which none of the later buildings could have been utilized.

To keep up with advances made in farm mechanization and soil conservation the agricultural engineering building was built that same year replacing an old wooden barn which had been in use since 1910. Also completed then was the seed laboratory in which better seed for the farms of the state are developed.

The now famous Clemson House and its surrounding apartment units were completed in the fall of 1950 relieving a critical housing shortage among the faculty and staff members.

During the next year the chemistry building was built and equipped to afford facilities for all Clemson students who must take basic chemistry as well as for the chemistry majors who leave the college ready to take their places in

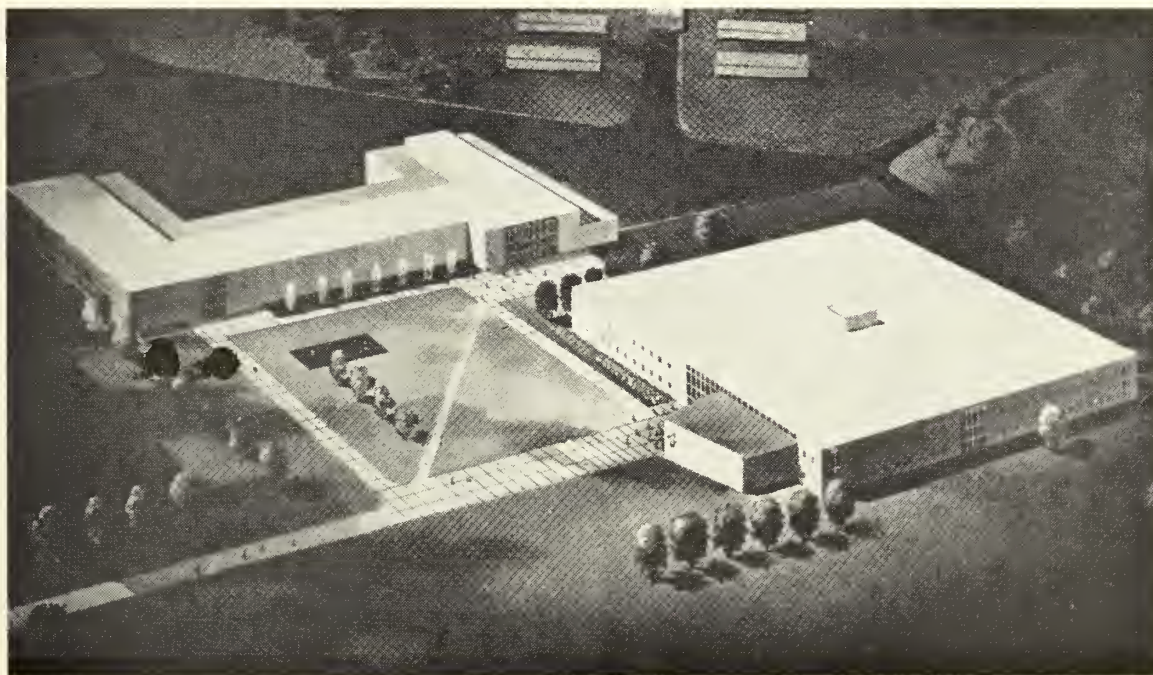
the mushrooming chemical industry in the South. In the same period the textile building, completed in 1938, was fully equipped with the latest textile machinery and devices.

In the fall of 1952 the Olin Foundation of Minneapolis, Minnesota, gave the college \$445,000 with which to construct a building to house teaching and research facilities in the field of ceramics. This move was made to help in developing South Carolina's relatively untouched, but potentially great, natural clay resources. Later the Foundation also provided \$180,000 to fill the building with the best ceramic manufacturing and testing equipment on the market.

Completed this fall, the new dormitory project contains 1000 rooms to house two students each, a dining room to accommodate 4000, complete kitchen facilities, a spacious lobby, an information center, a visitors lounge, a student canteen, club rooms, a small chapel, and a barber shop.

This structure with its five floors and 500,000 square feet of floor space is by far the largest ever attempted using the lift slab system and is the first of its kind in the Southeast. As such it has attracted much attention in the construction and engineering professions.

Work is now underway on the new agricultural group which when finished will contain a plant and animal science building, a food industry building, and greenhouses.



**The New Agricultural Center**





**THE AGRICULTURAL-ENGINEERING BUILDING**



**THE CHEMISTRY BUILDING**

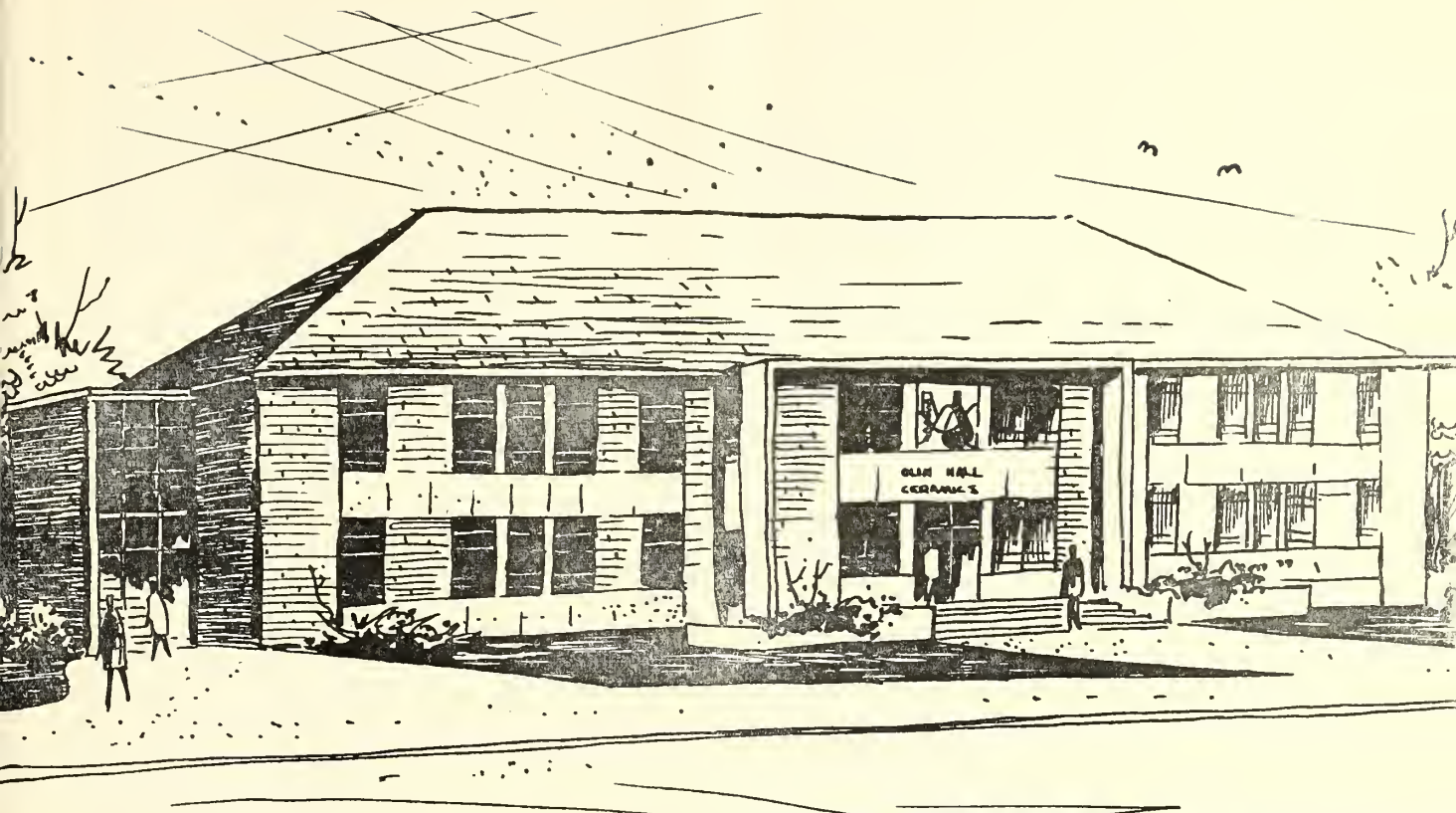


**THE CLEMSON HOUSE**



**DR. R. F. POOLE  
CLEMSON PRESIDENT**





... . OLIN HALL — Ceramic Engineering Building

## THE DELTA COMPANY

INCORPORATED



Manufacturers of

QUALITY SPORTS SHIRTS

AND DRESS SHIRTS

which are sold all over the country



ABBEVILLE, SOUTH CAROLINA

## PENDLETON OIL MILL

Pendleton, South Carolina



The Grass on Clemson's Football

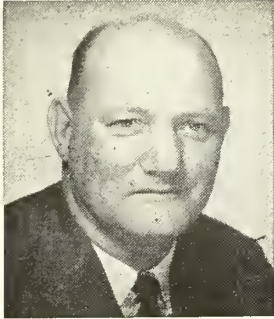
Field Was Fertilized With

Pendleton Fertilizer



# HEAD COACH FRANK HOWARD

With Peahead Walker and Herman Hickman out of the college coaching field, Clemson's Frank Howard wins the "biggest character" award hands down. Like fellow Alabaman Walker and Tennessean Hickman, Coach Howard has thrived on a reputation as jokester, hill-billy and country bumpkin. A thick Alabama drawl has helped the effect.



In reality, however, Frank Howard is one of the nation's most successful coaches. He's in his 24th year at Clemson — 15th as head coach and athletic director. Two of his teams — 1948 and 1950 — went unbeaten and were ranked in the "top ten" by the Associated Press.

Between 1948-51, Howard-coached elevens earned three bowl bids, defeating Missouri for the Gator Bowl Championship on January 1, 1949, and whipping Miami for the Orange Bowl Crown on January 1, 1951. Miami beat the Tigers in 1952 for the Gator Bowl title.

A single wing expert for 22 seasons, Coach Howard changed to the T-formation in 1953 and was outgaining such veteran T-teams as Georgia Tech, Wake Forest and Auburn before the first campaign was over. A notori-

ously hard worker, he and his assistants just dug into the new formation and came up with several variations of plays that would gain ground and score touchdowns.

In addition to his duties as football coach, Frank Howard is also kept busy with chores as athletic director at Clemson. At a recent meeting of athletic directors, he embarrassed several in attendance by asking "What do you do when your athletic program loses money? I've never been in that fix but have often wondered."

The young Howard was reared in the Mobile Ala., area, attending the local high school where he made quite a name for himself as student, leader and athlete. He was considered too small at 130 pounds for Alabama but attended the University at Tuscaloosa anyhow and was soon making his presence felt in the line from his guard position. He was a first stringer on Wallace Wade's Rose Bowl team of the 1930 season, being called the "Little Giant" on the Crimson Tide's "Herd of Red Elephants."

Still very active, the Clemson mentor insists on coaching his linemen altogether, in addition to supervising the over-all practice. Until recently, he didn't mind demonstrating what he meant about blocking though wearing no shoulder pads.

Coach Howard is married to the former Anna Tribble of Anderson. They are the parents of two children, Alice 18, and Jimmy 12.

PHONE 2-2727

309 N. MAIN STREET

## *Rosamond's Goodyear Service*



Distributors for

Goodyear Tires

Lifeguards

Batteries & Accessories

General Electric Appliances



GREENVILLE, SOUTH CAROLINA



# ASSISTANT COACHES - - CLEMSON COLLEGE



**RUSS COHEN**, Vanderbilt '17, is the senior member of the varsity coaching staff in age, though a latecomer (1947) in joining Clemson . . . A former head coach at LSU and Cincinnati, Cohen was also an assistant to Wallace Wade during that coach's years at Alabama in the 1920's . . . He's considered a defensive specialist, serving in that capacity since his arrival in Tigertown.



**COVINGTON (Goat) McMILLAN**, Clemson '30, returned to Clemson as backfield coach in 1937 after first serving as head coach at Griffin (Ga.) High and as an assistant at Furman . . . An All-South tailback at Clemson, he's coached some of the school's finest backs since arriving on the campus—Banks McFadden, Bobby Gage, Ray Mathews, Fred Cone, etc.



**BOB JONES**, Clemson '30, has been coaching at Clemson since his graduation — first working with the freshmen and more recently with the ends . . . During his playing days with the Tigers, he was an All-South end and captain of the varsity basketball team . . . Was head boxing coach until Clemson dropped the sport . . . Is chief counselor of the football players.



**BOB SMITH**, Furman '34 joined the Clemson varsity staff as a "T" specialist in 1950 on a part time basis, but has been a full time operator since early 1951 . . . Former assistant and head coach at Furman, he began experimenting with the "T" while stationed at Jacksonville in the Navy during World War II . . . He was named Atlantic Coast Conference Baseball Coach of the Year in 1954 as Clemson won the A.C.C. championship.



\* COMFORT

\* BEAUTY

\* ENTERTAINMENT

**CLEMSON THEATER**

Clemson, South Carolina

Always The Best In Film Fare



**FOOTBALL**

**BASKETBALL**

**GOLF BASEBALL TENNIS**

»«

**BILL DILLARD'S**

**Sporting Goods**

127 E. Whitner P.O.Box 473 Phone 1887

**ANDERSON, SOUTH CAROLINA**

»«

**Archery Fishing Swimming**

**Hunting Sportswear**





The Chiquola Manufacturing Company was founded in 1902. Through constant adoption of new ideas, new methods and modern machinery it has continued to grow and play an important part in the industrial progress of South Carolina.

During this long period of successful operation under the same management, Chiquola has produced more than ONE BILLION YARDS of cotton fabrics; it has purchased more than FIFTY-TWO MILLION DOLLARS worth of cotton from the farmers of the South; it has paid MILLIONS of dollars in taxes to the City, County, State, and Federal Governments; it has donated thousands of dollars to schools, churches, orphanages, and charitable organizations; and last but not least, it has paid more than TWENTY-SIX MILLION dollars in wages to the hundreds of fine people who have been on its payroll over the years.

Former CLEMSON MEN occupy important positions in our management and we are fully cognizant of the important part this outstanding institution is playing in the development of the South through the education of our leaders of tomorrow.

When autumn leaves are falling and the strains of Tiger Rag resound from the hills of the Blue Ridge, we lend our voice to the plaudits of the multitude with that old familiar refrain, "GO - TIGERS - GO"

## CHIQUOLA MANUFACTURING COMPANY

HONEA PATH, SOUTH CAROLINA



# CLEMSON-FURMAN RIVALRY DATES BACK TO 1896

It seems only fitting that Clemson's 1954 Homecoming should be marked by the renewal of the Furman football series following a lapse of two years. It goes back to 1896 — the year Clemson commenced football — and is second only to the South Carolina rivalry in number of contests played. Though the Tigers hold 24-10-4 edge in the 38-game series, fans of yesteryear will testify to the competition keenness in the majority of the contests.

Coach Bill Young brings a strong first eleven to Clemson this year—one which has

compiled a 5-2 record in winning over Newberry, Presbyterian, Davidson, The Citadel and North Carolina State and losing to strong South Carolina and Miami. Only real shortcoming of the Hurricanes has been inexperience of reserves. Coach Young has had to rely almost entirely on freshmen once past his first eleven.

Tiger Coach Frank Howard hopes his team will climb above the .500 mark with a victory. The Clemson record shows wins over Presbyterian, Florida and Wake Forest and losses to Georgia, Virginia Tech and South Carolina.

## Pre-Game Program

Homecoming Queen and Sponsors introduced

Clemson Cadet Corps parade and formation on football field

1. Alma Mater

Card Section

Welcome by Dr. R. F. Poole, president of Clemson College

Prayer by Cadet Chaplain Framp Harper

National Anthem by Clemson Band, directed by Robert E. Lovett

## Half-Time Program

Furman University Band, directed by Sam Arnold

Drill by Senior Platoon (Cadet Colonel David Morris) and Pershing Rifles  
(Battalion Sergeant Major Marion Sams)

Coronation Program

1. Homecoming Queen and Court
2. President of Alumni Association—Frank Jervey
3. College Organization Representatives—  
(a) Student Body, (b) Cadet Corps, (c) Central Dance Association,  
(d) Blue Key and (e) Block C
4. Clemson College Band
5. Color Guard
6. Senior Platoon
7. Pershing Rifles



# YOUR BEST BUY

## JIM ANDERSON . . . .

. . . is no stranger to the sports world. A veteran newsman, Jim recently turned his talents toward providing readers of The Greenville News with the finest morning sports pages in upper South Carolina. Jim and his versatile staff assure you complete and unbiased coverage of every sports event, large and small.



## YOU GET MORE

- ☆ HIGH SCHOOL FOOTBALL STORIES
- ☆ EXCLUSIVE FOOTBALL PICTURES
- ☆ EXCLUSIVE FOOTBALL STORIES
- ☆ GAME STORIES-COAST-TO-COAST
- ☆ GAME SCORES-COAST-TO-COAST
- ☆ ACTION PHOTOS-COAST-TO-COAST



## ANTHON FOY . . .

. . . has been reporting the sports scene in upper South Carolina for the last 15 years. He knows all the angles of every sport. Anthon likewise knows how to tell the full story of each sporting event in a manner that makes his Greenville Piedmont sports pages the best read of any upper South Carolina afternoon newspaper.

## NO EXTRA COST . . .

. . . is involved. Readers of South Carolina's finest daily newspapers, The News and The Piedmont, get complete papers with all the news presented fairly, plus full picture coverage, the best in features and comics, and on Sunday Parade Magazine in The News.

**Greenville News**  
MORNING & SUNDAY  
**GREENVILLE PIEDMONT**  
EVENING

EVERYDAY



# S P O N S O R S



# '5 4 T I G E R

Sponsors for Clemson's senior football players at Homecoming with Furman today are as follows: (top row, left to right) Miss Geneva Porter of Williston for Willis Crain; Mrs. Buck (Kay) George of Rock Hill for Buck George; Mrs. N. A. Hildebrand of St. Matthews for Nolten Hildebrand; Miss Barbara Clink- scales of Starr for Jerry Jackson; Mrs. Scott (Rosanne) Jackson of Manning for Scott Jackson; and Miss Joan Simon of Greenville for Mark Kane. Middle row, Miss Luzanne Medlock of Pendleton for Harry Liffage; Mrs. Tom (Joyce) Mattos of Greenville for Tom Mattos; Mrs. Bill (Ann) McLellan of Fork for Bill McLellan; Miss Marilyn Burnette of Sequatchie, Tenn.; for Bobby Mooneyhan; Miss Marcia Poole of Clemson for Ken Moore; and Mrs. Robert (Mariene) Paredes of Irwin, Pa., for Robert Paredes. Bottom row, Mrs. Dink (Barbara) Staples of Abbeville for Dink Staples; Mrs. Don (Joan) Ross of Hamonton, N. J., for Don Ross; Miss Gail Morris of Anderson for Johnny Tice; Miss Gray Harden of Albany, Ga., for Pete Wall; Mrs. Clyde (Dot) White of Greenville for Clyde White; and Mrs. Richard (Barbara) Whitten of Macon, Ga., for Red Whitten.






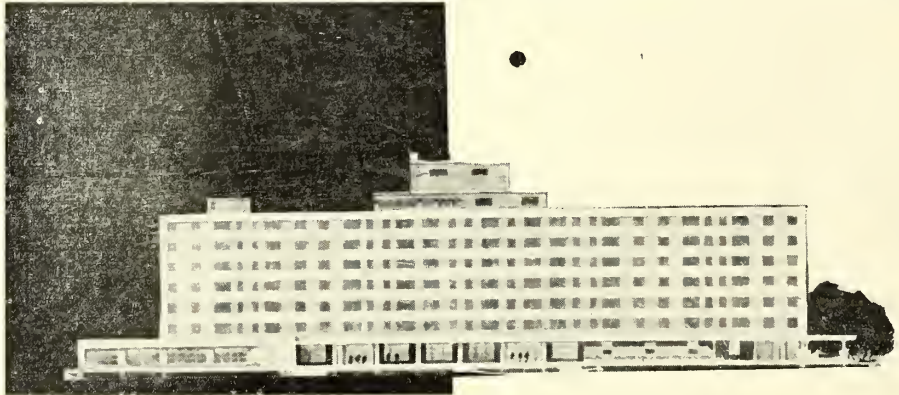
JOHN LANEY PLYLER, LL.B., LL.D.  
President of Furman University



WILLIAM A. (BILL) YOUNG  
Head Coach

"One of the best in the South . . . ultra-modern . . . says 

After  
the Game  
Meet Your  
Friends  
in the  
TIGER  
TAVERN  
in the  
Lower  
Lobby



 *Clemson House*

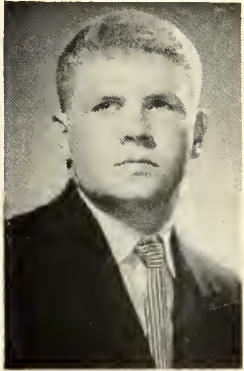
In the foothills of the beautiful Blue Ridge Mountains, you'll find the Clemson House located in a unique setting — right on the campus of Clemson College. Here you will find all of the services of a great metropolitan hotel yet you will be far away from the noise of a large city. And you'll enjoy the beautifully landscaped grounds and the flower beds. The splendid accommodations and the excellent cuisine offered at the Clemson House are combined with warm friendly hospitality and fine service. The Clemson House is a gem among fine hotels, and the rates are almost unbelievably low. All rooms are air conditioned. Four dining rooms and the Tiger Lounge and Coffee Shop. There is swimming, fishing and golf nearby

FRED L. ZINK, JR., Manager

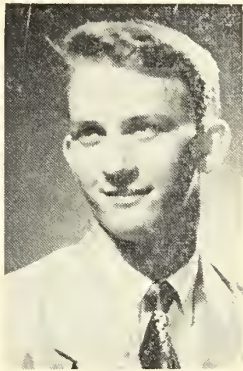
On East Edge of Clemson, S. C., on U.S. 78, 123 and State 28.



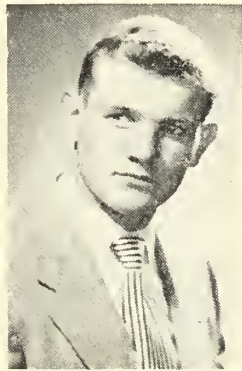
PURPLE PALADINS OF FURMAN UNIVERSITY



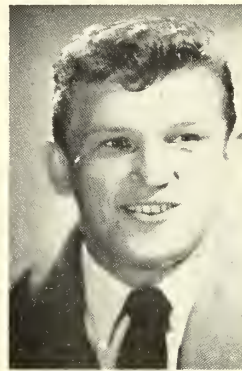
Dave Young



Donnie Garrison



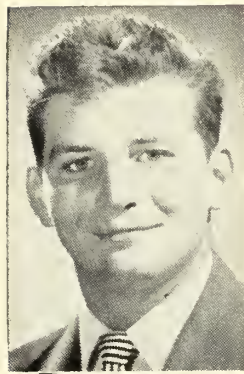
Bob Dellinger



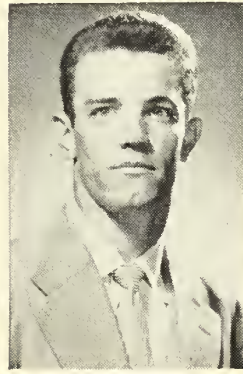
Ted Yakimowicz



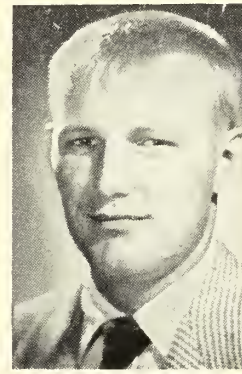
Emil Reugner



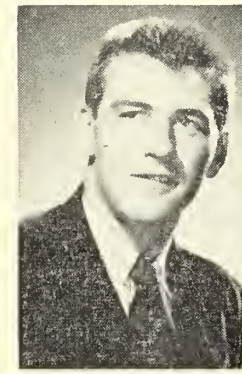
John Socha



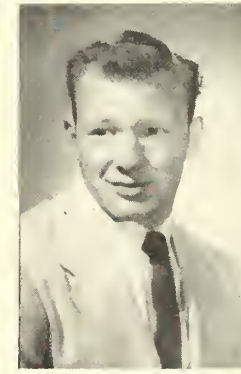
Jim Boyle



Jackie Harris



John Popson



Bobby Stokes



Roland Barefoot



Jimmie Coker



Bobby Jennings



Webster Williams



Dick Kolans



Larry Seay



Andy Bielecki



L. G. Hightower



Johnny Johnson



Jack Anderson

## **A Touchdown Is A Touchstone of Teamwork!**

Though it takes but one man to make a touchdown, his teammates help to make it possible. The better the teamwork, the more victories. Star players are important, but nevertheless are dependent on every man doing his job.

A sale is like a touchdown in that it is crossing the business goal line. The salesman will sell better if he has a good organization or team behind him.

The Irving L. Wilson Company, manufacturer of Clemson uniforms, is constantly striving to improve the teamwork of its organization. We believe we serve our customers well only when every person in our organization, no matter what his job, performs his duties with efficiency, initiative, and good spirit.

Here's wishing Clemson many a Tiger Touchdown!

**IRVING L. WILSON COMPANY**

**No 1 Highland Avenue**

**BALA-CYNWYD, PENNSYLVANIA**



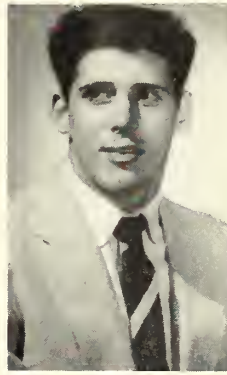
# PURPLE PALADINS OF FURMAN UNIVERSITY



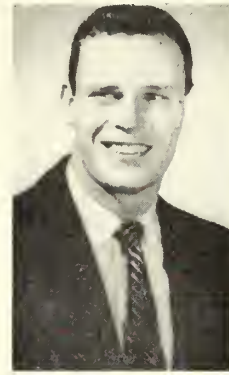
Harold Bolick



Charles Bagwell



Bill Petty



Bob Biggerstaff



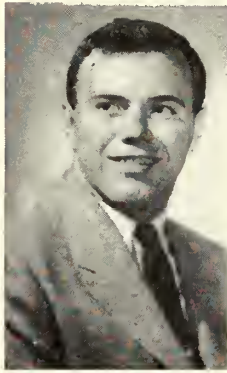
Francis Lindler



Jimmy Grant



Roger Hall



Dale Hamel



Cecil Clardy



Bob Medlin



Bill Weir



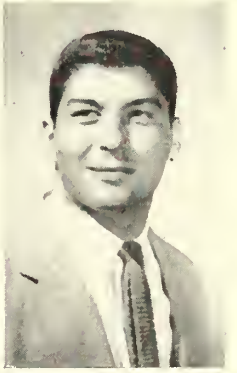
Julian Freeman



John Albert



Bob Halford



Nick Tzouvelekas



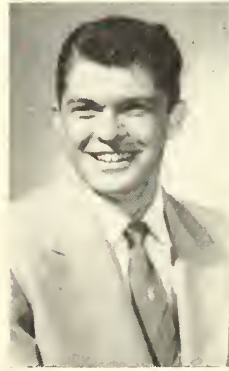
George Beck



Charles Carter



Gus Pringels

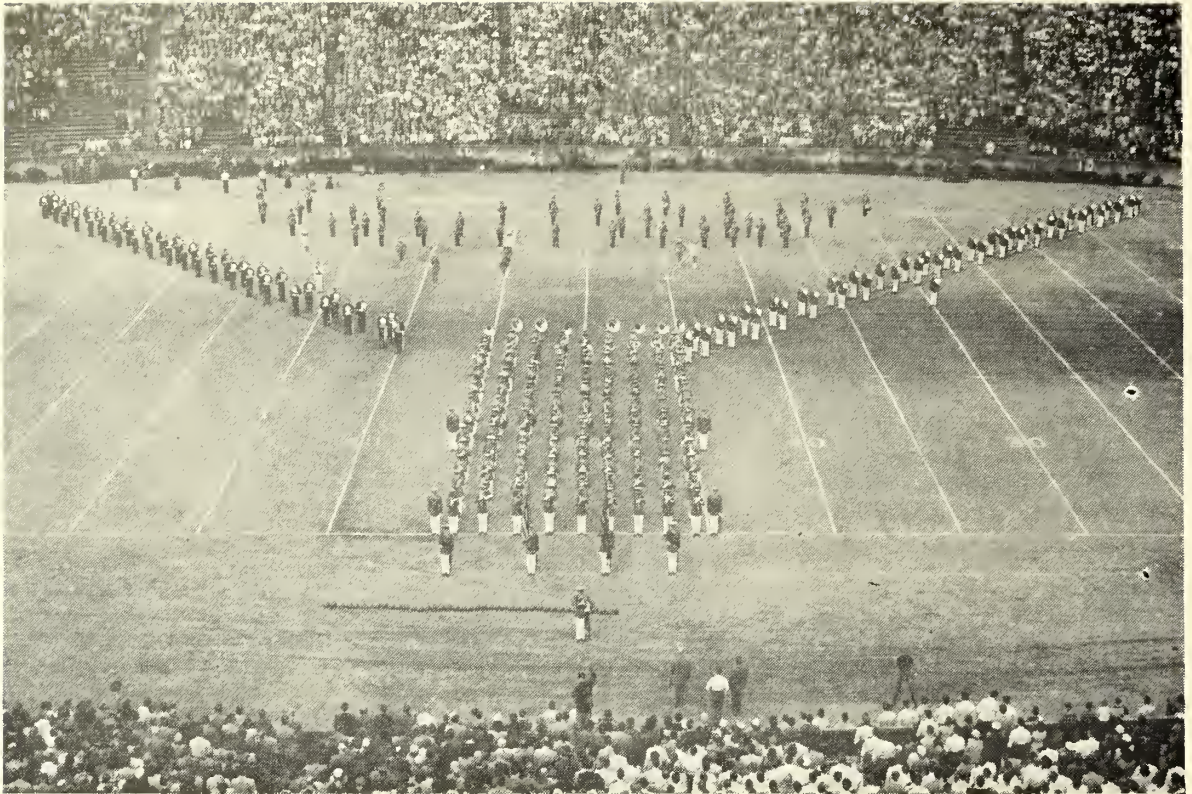


Jerry Penland



Sidney Maddox





Clemson College Marching Band — Robert E. Lovett, Director

HEYWARD MAHON  
COMPANY

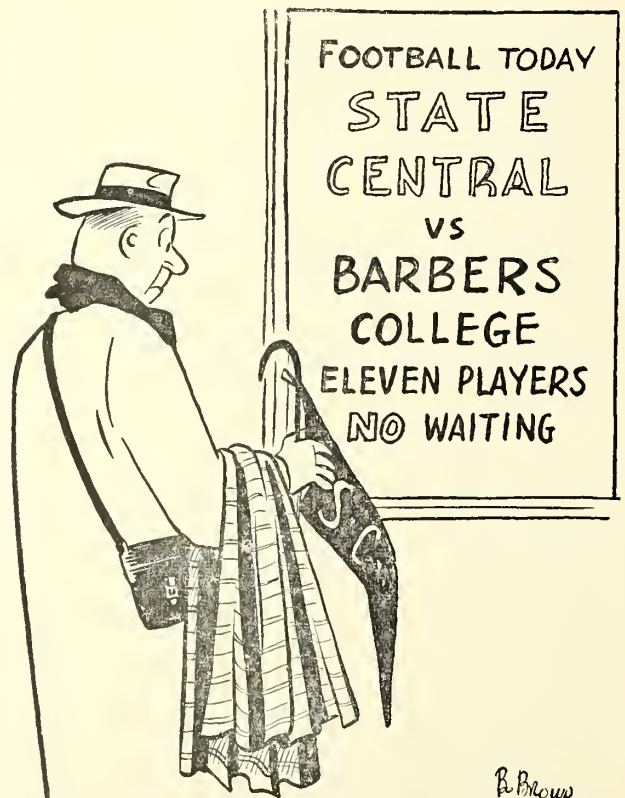


The Quality Store For  
Men and Boys



GREENVILLE  
SOUTH CAROLINA

Clemson Headquarters in Greenville



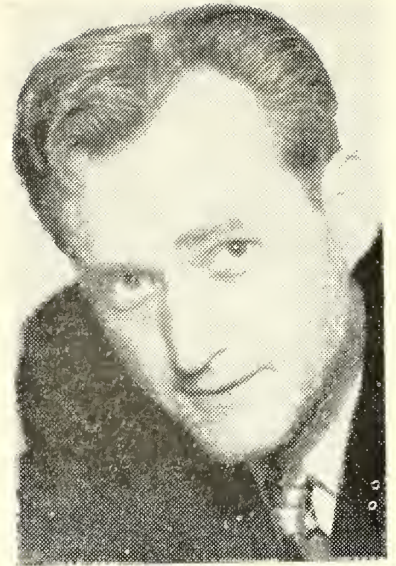


The "Ole Red Head" gives readers of

# The Anderson Independent

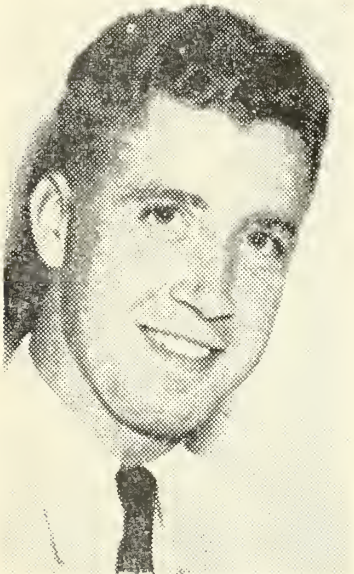
## TOPS IN SPORTS COVERAGE

"Red" Canup, with an able staff of writers and photographers, covers the MOST of the BEST of the sports events in this area! For solid enjoyment, read THE INDEPENDENT sports pages. And follow the "Ole Red Head's" column daily and Sunday!



"RED" CANUP  
Sports Editor

WAIM-TV . . . Channel 40  
CBS-TV Live Programs



BRENT BREEDIN  
Daily Mail Sports Columnist

# The Daily Mail

Features the comment of an outstanding sports authority, BRENT BREEDIN, together with many other top sports page features — each afternoon! You'll enjoy the sports pages of THE ANDERSON DAILY MAIL — for 55 years one of the South's Great Newspapers.

WAIM-TV . . . Channel 40  
Live CBS Programs

THE CIRCULATION OF ANDERSON'S DAILY NEWSPAPERS IS MORE THAN

# 50,000

Leading All North And South Carolina Publications In Gains For 10 Years

Tune WAIM and WCAC (FM — named for Clemson College)

for ALL CLEMSON GAMES! If the Clemson Tigers went to Hades (to play football, that is) the ANDERSON radio stations would be in there broadcasting the games! For 19 years WAIM has maintained studios on the Clemson Campus and followed the TIGERS game by game! AND . . .

WAIM-TV . . . CBS-TV for ANDERSON-GREENVILLE AREA  
Channel 40!

**Your car will run like a  
Clemson football player on**

# **SHELL OIL PRODUCTS**



## **Real Power . . .**

Shell Premium Gasoline Now Contains **TCP**

THE GREATEST GASOLINE DEVELOPMENT IN 31 YEARS  
UP TO 15% MORE POWER . . . MORE MILEAGE

**KING OIL CO.**

Shockley Ferry Road

and

**HOME OIL CO.**

East River Street

JOBBERS OF SHELL PRODUCTS

Anderson, South Carolina



**DON KING — 1953 FOOTBALL'S  
TOP SPORTSMAN**

*The Gridiron Club Salutes!*

—By Bob Coyne

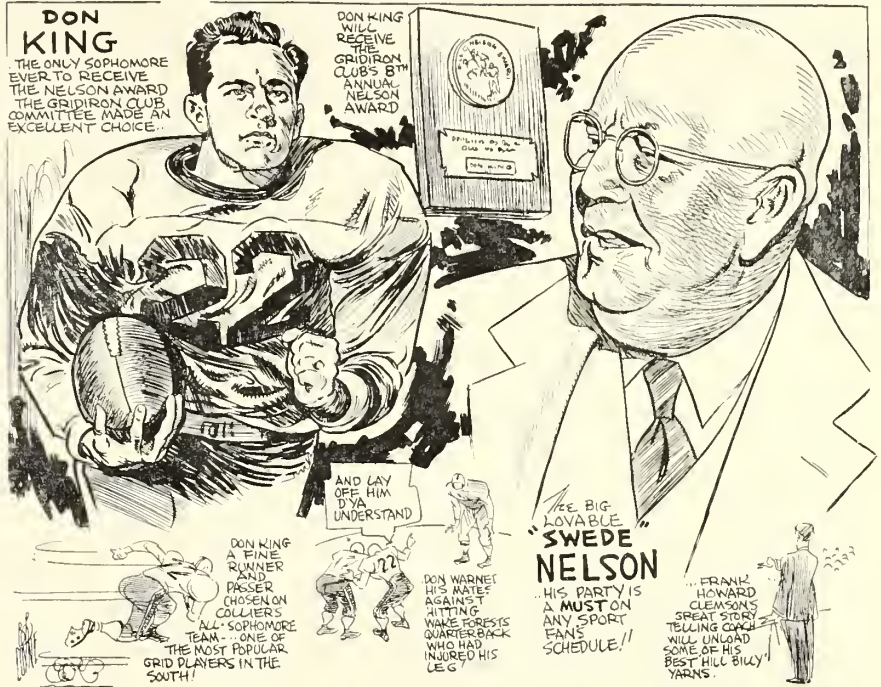
When Clemson quarterback Don King was tapped by the Boston Gridiron Club as college football's 1953 recipient of the Nils (Swede) Nelson Award for Sportsmanship, his coaches, teammates and opponents alike were unanimous in their approval.

Though one incident in the Wake Forest game was largely responsible for the Boston's Club's selection, Don's natural traits of sportsmanship and unselfishness also figured in the choice.

Praising his teammates for their blocking and tackling, helping an opponent to his feet, refusing to let the countless words of acclaim written about him change his unspoiled outlook, King is everyone's favorite.

The incident which won for him the Nelson Award (pictured in cartoon form at left) was as follows:

In the Wake Forest game, opposing quarterback Sonny George injured his knee and was stretched out on the field for several minutes while the Wake Forest trainer worked on him. Don King knelt over George and talked to him during



Reprinted from *The Boston Post*.

most of this timeout, then returned to the Clemson huddle and told his teammates: "Listen, George has got a bad knee. If he gets hit on it again, he might not play any more this year

or might even get hurt permanently. If you have to hit him again today, hit him high." The incident was told (and confirmed) by the Clemson regulars sometime later in the season.

**CLEMSON'S FOOTBALL TEAM**

AND

**CLEMSON'S TEXTILE SCHOOL**

ARE RATED AT THE TOP BY

**TEXTRON SOUTHERN**

PLANTS IN

NORTH CAROLINA, SOUTH CAROLINA, AND GEORGIA





FOOTBALL MANAGERS work the longest hours and receive the least credit of any group working in college athletics. Spearheading the managers in 1954 are Earl Herndon of Fountain Inn (left) and Gerald Fleming of Anderson, two conscientious young men in the junior class at Clemson.

L. J. Forrester  
President

L. J. Forrester, Jr.  
Vice President

**GREENVILLE AUTO SALES CO.**  
INCORPORATED

"YOUR FRIENDLY FORD DEALER"

PARTS    USED CARS    SERVICE

Phone 2-2461      Cor. E. McBee & Church

GREENVILLE, SOUTH CAROLINA

DONUTS ARE BEST WHEN  
YOU BUY THEM AT THE  
**Carolina Creme Donut  
Shop**

309 Greenville Street

ANDERSON, S. C.

Compliments of

**Belton Bottling Company**

Bottlers of

**ORANGE CRUSH and NU GRAPE**

Belton, South Carolina

Registered Jewelers    American Gem Society

FINE DIAMONDS    WATCHES  
STERLING SILVER    CHINA

"WHAT WE SAY IT IS, IT IS"



**H A L E ' S**

Leading Jewelers and Diamond Merchants  
Since 1856

GREENVILLE, SOUTH CAROLINA





CLEMSON'S CO-CAPTAINS Buck George, Mark Kane, Clyde White and Scott Jackson (left to right) have held down key positions for the Tigers since 1951. Halfback George was a regular on the Gator Bowl eleven of '51 as a freshman; end Jackson and tackle White were regulars in '52 and '53; and Kane took over as a regular guard last fall.

**FOR A QUICK SNACK BEFORE AND AFTER THE GAME**

Stop At . . . **D A N ' S** Across the street from  
KLUTTZ STEAK HOUSE  
\* \* \* \* \*

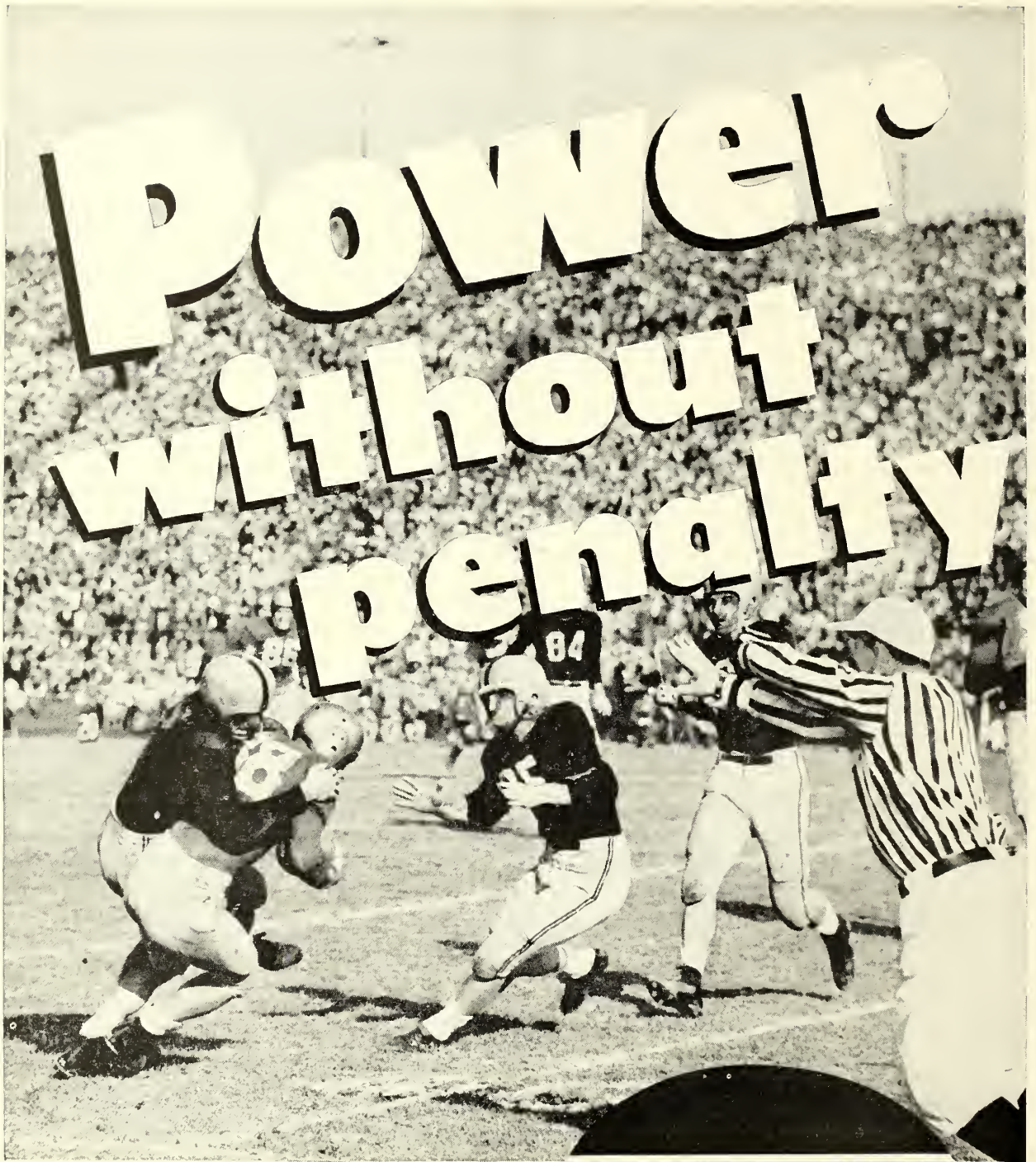
**When** . . better teams are had, Clemson will have them.

**When** . . better coaches are had, Clemson will have them.

**When** . . better Country Ham and Steaks are served, Kluttz will serve them.

**KLUTTZ STEAK HOUSE**  
CLEMSON, SOUTH CAROLINA





In a football game, the power of the whole team can be wasted by penalties.

So, too, in motor fuels. An additive in a premium gasoline can cause a harmful metallic deposit—can make your car pay a penalty in lost power.

Amoco-Gas *has* no additive because it needs none. It's *pure* petroleum. It delivers power without penalty. Just *test* it!

AMERICAN OIL COMPANY



# CLEMSON'S 1954 HALFBACKS



JIM COLEMAN



BUCK GEORGE



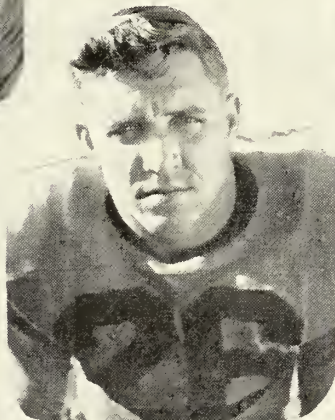
JOE  
PAGLIEI



KEN MOORE



DOUG THOMPSON



"SHOT" ROGERS



JOEL WELLS



BOB PAREDES



LEM M'LENDON

# PENALTIES

## LOSS OF FIVE YARDS

1. Taking more than five times out during either half (except for replacement of injured player).
2. Illegal delay of game.
3. Failure to complete substitution before play starts.
4. Violation of kickoff formation.
5. Player out of bounds when scrimmage begins.
6. Putting ball in play before Referee signals "Ready-for-play".
7. Failure to maintain proper alignment of offensive team when ball is snapped. Also, backfield man illegally in motion.
8. Offside by either team or encroachment on neutral zone.
9. Attempt to draw opponents offside.
10. Crawling by runner.
11. Illegal forward pass (includes intentional grounding of forward pass). Also loss of down.
12. Taking more than two steps after Fair Catch is made.
13. Player on line receiving snap.
14. Any violation of the scrimmage formation.

## LOSS OF FIFTEEN YARDS

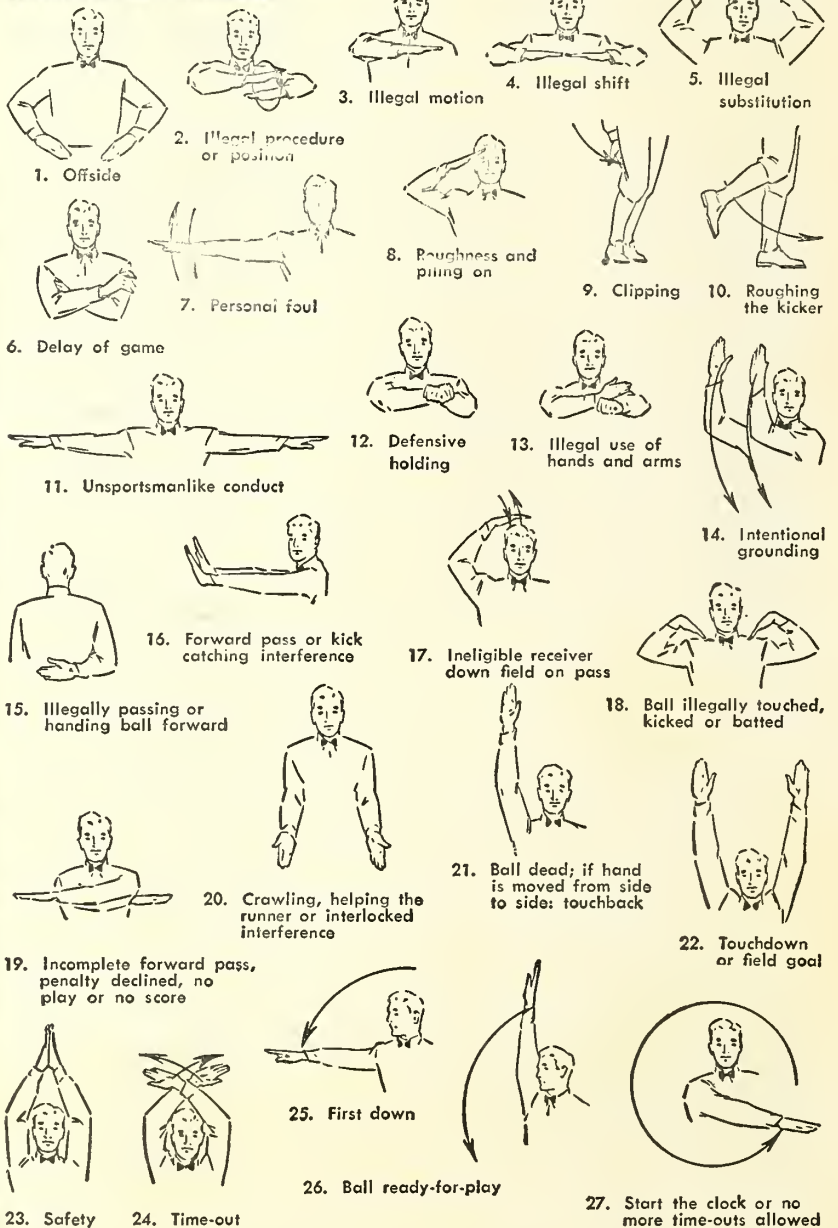
15. Team not ready to play at scheduled time.
16. Violation of rules during intermission.
17. Illegal return of suspended player.
18. Interference by member of offensive team with defensive player making pass interception. (Also loss of down.)
19. Interference with opportunity of player of receiving team to catch a kick.
20. Illegal use of hands or arms by offensive player.
21. Tackling or blocking defensive player who has made fair catch.
22. Roughing the kicker.
23. Piling up, hurdling, clipping.
24. Tackling player out of bounds, or running into player obviously out of play.
25. Coaching from sidelines.
26. Failure to stop one full second following shift.
27. Defensive holding.
28. Invalid Signal for Fair Catch.

## OTHER PENALTIES

29. Striking an opponent with fist, forearm, elbow or locked hands, kicking or kneeling — Mandatory disqualification of offending player plus loss of fifteen yards.
30. Foul within the one yard line—half the distance to the goal.
31. Interference by defensive team on forward pass—passing team's ball at spot of foul.
32. Forward pass being touched by ineligible receiver beyond the line of

- scrimmage—loss of fifteen yards from spot of preceding down and loss of a down.
33. Illegal touching of kicked ball within opponent's ten yard line — touchback.
34. Flagrantly rough play or unsportsmanlike conduct — Mandatory disqualification plus loss of fifteen yards.
35. Eligible pass receiver who goes out of bounds and later touches a forward pass — loss of down.

### REFEREES' SIGNALS







ENJOY THE GAME! PAUSE AND



### CLEMSON COLLEGE ROSTER

No.	Name	Age	Ht.	Wt.	Hometown	Class
<b>Ends</b>						
46	Bowen, Joe*	20	6-2	190	Villa Rica, Ga.	Jr
57	Bowick, Ray	20	6-1	190	Greenwood	So
62	Hicks, Harry	20	6-0	185	Kershaw	So
45	Hudson, Bill	19	6-5	210	N. Charleston	So
78	Jackson, Scot*	22	6-1	185	Manning	Sr
63	Laraway, Walt*	21	6-0	180	McKeesport, Pa.	Jr
38	Rivers, Dalton	20	6-3	195	Chesterfield	So
76	Smith, Willie	19	6-0	190	Spartanburg	So
85	Wall, Pete*	21	6-1	200	Charleston	Jr
<b>Tackles</b>						
47	Crain, Willis	21	6-2	220	Chester	Jr
60	Inabinet, B. C.*	20	6-6	240	Columbia	Jr
44	Marazza, Dick	21	6-4	220	Greensburg, Pa.	So
43	Mattos, Tommy*	21	6-3	220	Greenville	Sr
27	Sease, Tommy	19	6-0	190	Clinton	So
51	White, Clyde*	22	6-2	210	Greenville	Sr
<b>Guards</b>						
39	Bruorton, H. B.	20	5-10	190	Georgetown	So
68	Bunton, Don	19	6-0	190	Pelzer	So
25	DeSimone, Dick	20	5-11	190	Avonmore, Pa.	So
37	Greene, Earl	19	6-0	190	St. Stephen	So
72	Greene, Johnny	21	6-0	200	Union	Jr
41	Hildebrand, Nolten*	21	5-9	215	St. Matthews	Sr
83	Jackson, Jerry	21	5-11	196	Bennettsville	Jr
42	Kaltenbach, Leon	18	5-10	210	Clairton, Pa.	So
56	Kane, Mark*	22	5-11	205	Millburn, N. J.	Sr
86	Monroe, Kent	19	5-10	186	Irwin, Tenn.	So
65	Priester, Buck*	21	5-11	190	LaGrange, Ga.	Jr
35	Rhinehart, Don	20	5-10	190	Inman	So
79	John Tice	21	5-10	185	Anderson	Jr
<b>Centers</b>						
24	Avery, Wingo*	21	6-0	200	Newnan, Ga.	Jr
64	Hunter, Hampton*	20	6-4	220	Central	Jr
75	McClellan, Bill*	22	5-11	225	Dillon	Sr
81	Staples, Dink	21	6-0	205	Abbeville	Jr
<b>Quarterbacks</b>						
20	Bussey, Charlie	20	6-0	165	Henderson, N. C.	So
21	Paredes, Bob*	24	5-8	175	Irwin, Pa.	Sr
77	Frick, Larry	19	6-2	185	Columbia	So
66	King, Don*	20	5-10	165	Anderson	Jr
82	Ross, Don*	22	5-11	180	Rock Hill	Sr
36	Williams, Tommy*	20	6-0	180	Paris	Jr
<b>Halfbacks</b>						
22	Coleman, Jim	19	6-0	170	Honea Path	So
30	George, Buck*	22	6-0	170	Rock Hill	Sr
55	McLendon, Lem	22	5-6	160	Albany, Ga.	So
49	Moore, Ken*	23	5-8	165	Calhoun, Ga.	Sr
40	Pagliei, Joe*	20	6-0	200	Clairton, Pa.	Jr
26	Rogers, Shot	21	5-9	165	Mullins	So
53	Thompson, Doug	21	5-10	185	London, Ont., Canada	So
70	Wells, Joel	20	6-0	185	Columbia	So
<b>Fullbacks</b>						
48	Ankuta, Neuf	21	6-0	190	Brooklyn, N. Y.	Jr
31	Griffith, Frank	20	6-0	195	Elberton, Ga.	So
23	Hankinson, Crimmins*	22	5-11	200	Waynesboro, Ga.	Jr
67	O'Dell, Bill*	20	5-10	200	Newnan, Ga.	Jr
34	Spooner, Bob	19	5-11	205	Ogdensburg, N. Y.	So
29	Whitten, Red*	20	5-10	180	Macon, Ga.	Sr

\* Lettermen.

**Coca-Cola Bottling Company, Anderson, S. C.**

**C. KIRBY HOOVER, Manager**



# CLEMSON

## PROBABLE STARTING LINEUP

No.	Name	Position
63	WALT LARAWAY . . .	LE
51	CLYDE WHITE . . .	LT
56	MARK KANE . . .	LG
24	WINGO AVERY . . .	C
25	DICK DeSIMONE . .	RG
43	TOMMY MATTOS . .	RT
78	SCOTT JACKSON . .	RE
66	DON KING . . . . .	QB
70	JOEL WELLS . . . .	LH
40	JOE PAGLIEI . . . .	RH
67	BILL O'DELL . . . .	FB

## The Tiger Squad

20	Bussey, QB	54	Fox, RE
21	Paredes, RH	55	McLendon, LH
22	Coleman, RH	56	Kane, LG
23	Hankinson, FB	57	Bowick, RE
24	Avery, C	58	Toth, RT
25	DeSimone, RG	60	Inabinet, RT
26	Rogers, LH	61	Bryant, LG
27	Sease, RT	62	Hicks, LE
28	Carlton, LE	63	Laraway, LE
29	Whitten, FB	64	Hunter, C
30	George, LH	65	Priester, LG
31	Griffith, FB	66	D. King, QB
32	Gisewhite, LH	67	O'Dell, FB
33	Lifrage, RT	68	Bunton, RG
34	Spooner, FB	69	Holland, LE
35	Rhinehart, RG	70	Wells, LH
36	Williams, QB	71	Kissam, RH
37	Mooneyhan, C	72	J. Greene, RG
38	Rivers, RE	74	S. King, LT
39	Bruorton, LG	75	McLellan, C
40	Pagliei, RH	76	Smith, RE
41	Hildebrand, LG	77	Frick, QB
42	Kaltenbach, LG	78	S. Jackson, RE
43	Mattos, RT	79	Tice, RG
44	Marazza, LT	80	Corrigan, RH
45	Hudson, LE	81	Staples, C
46	Bowen, RE	82	Ross, QB
47	Crain, LT	83	H. Thompson, RE
48	Ankuta, FB	84	Rause, RG
49	Moore, RH	85	Wall, LE
50	Cromer, LT	86	Monroe, RG
51	White, LT	87	E. Greene, RG
52	McKellar, RT	88	J. Jackson, LG
53	D. Thompson, LH		

## CHESTERFIELD

AMERICA'S MOST POPULAR  
2-WAY CIGARETTE

Either Way - THE QUALITY

JEAN AND THE CORBET

CHESTERFIELD CIGARETTES

LIGGETT & MYERS TOBACCO CO.

FOR TASTE AND MILDNESS.



# ITY YOU WANT!



JOAN  
TWINNS

# CHESTERFIELD BEST FOR YOU

## FURMAN

### PROBABLE STARTING LINEUP

No.	Name	Position
60	L. G. HIGHTOWER . . .	LE
53	JULIAN FREEMAN . . .	LT
42	DALE HAMEL . . . . .	LG
46	JOHN SOCHA . . . . .	C
47	WEBSTER WILLIAMS	RG
59	DAVE YOUNG . . . . .	RT
61	SIDNEY MADDOX . . .	RE
34	GUS PRINGELS . . . . .	QB
33	JOE APPELLO . . . . .	LH
28	JOHN POPSON . . . . .	RH
24	BOB DELLINGER . . .	FB

### The Hurricane Squad

12	Carter, QB	47	Williams, RG
13	Penland, HB	48	Hall, G
14	Biggerstaff, T	49	Bolick, LG
15	Jennings, C	51	Beck, T
16	Yakimowicz, LHB	52	Seay, T
17	Albert, FB	53	Freeman, LG
20	Weir, HB	54	Reugner, C
22	Coker, FB	55	Lyle, T
24	Dellinger, FB	56	Craven, T
26	Petty, HB	57	Mincey, T
27	Edwards, FB	58	Halford, T
28	Popson, RHB	59	Young, RT
30	Stewart, HB	60	Hightower, LE
31	Kolans, QB	61	Maddox, E
32	Grant, HB	62	Medlin, E
33	Appello, LH	63	Barefoot, RE
34	Pringels, QB	64	Pfeifer, E
36	Ward, HB	65	Harris, LT
37	Boyle, QB	66	Johnson, G
41	Anderson, G	67	Dacus, T
42	Hamel, G	69	Cubbage, T
43	Tzouvelekas, G	71	Stokes, G
44	Bielecki, G	74	Garrison, C
45	Lindler, G	75	Clardy, G
46	Socha, C		

## CHESTERFIELD

LARGEST SELLING CIGARETTE  
IN AMERICA'S COLLEGES

# ...THEY SATISFY MILLIONS!





## PURPLE HURRICANE ROSTER

No.	Name	Wt.	Hometown	Class
<b>Ends</b>				
63	Barefoot, Roland*	185	Lancaster	Sr
60	Hightower, L. G.*	195	Bamberg	Jr
61	Maddox, Sidney	180	LaGrange, Ga.	So
62	Medlin, Bob	185	Florence	So
64	Pfeifer, Dick	205	Hasbrouck Hgts., N. J.	Fr
<b>Tackles</b>				
44	Bielecki, Andy*	220	Rutherford, N. J.	Jr
56	Craven, Paul	194	Charleston	So
53	Freeman, Julian	197	Lanett, Ala.	So
58	Halford, Bob	205	Columbia	So
65	Harris, Jackie*	200	Sulligent, Ala.	Sr
45	Linder, Francis	194	Savannah, Ga.	So
55	Lyle, Grady	214	Rock Hill	Fr
57	Mincey, Ronnie	218	Citra, Fla.	Fr
52	Seay, Larry	200	Boiling Springs	So
59	Young, Dave*	210	Asheville, N. C.	Jr
<b>Guards</b>				
41	Anderson, Jack	195	Hartwell, Ga.	Fr
49	Bolick, Harold	190	Clark Township, N. J.	Fr
75	Clardy, Cecil*	220	Liberty	Jr
48	Hall, Roger	180	Greenville	Fr
42	Hamel, Dale	192	Masillon, Ohio	So
46	Socha, John	191	Wallington, N. J.	Sr
71	Stokes, Bobby	185	Bishopville	Fr
43	Tzouvelekas, Nick	190	Greenville	Fr
47	Williams, W.*	205	Florence	Sr
<b>Centers</b>				
74	Garrison, Donnie	192	Liberty	So
15	Jennings, Bobby*	176	Columbia	So
54	Reugner, Emil	200	Union, N. J.	Fr
<b>Quarterbacks</b>				
37	Boyle, Jim*	171	Lancaster	Jr
12	Carter, Charles	181	Greenville	So
31	Kolans, Dick	171	Raritan, N. J.	Fr
34	Pringels, Gus*	166	Sumter	Jr
<b>Halfbacks</b>				
33	Appello, Joe	165	Roselle Park, N. J.	Fr
32	Grant, Jimmy	196	Rock Hill	Fr
13	Penland, Jarry	170	Greer	Fr
26	Petty, Bill	177	Gaffney	Fr
28	Popson, John*	195	Sawyer ville, Pa.	Jr
30	Stewart, Jack	176	Winnsboro	Fr
36	Ward, Pete	165	Centreville, Va.	Fr
20	Weir, Bill	165	Columbia	Fr
16	Yakimowicz, Ted*	180	Wallington, N. J.	Sr
<b>Fullbacks</b>				
17	Albert, John	225	New Brunswick, N. J.	Fr
22	Coker, Jimmie	200	Holly Hill	Fr
24	Dellinger, Bob*	180	Hickory, N. C.	Jr
27	Edwards, Vernon	190	Hartwell, Ga.	Fr

\* Lettermen.

### OFFICIALS

Referee: W. R. Dukes (South Carolina); Umpire: F. Turner (South Carolina); Linesman: B. Harper (South Carolina); Judge: T. Gressette (South Carolina).

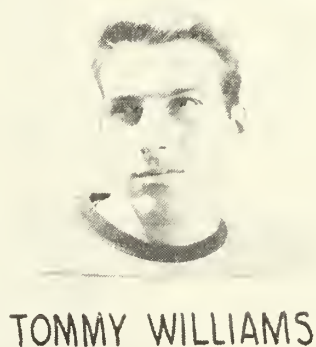
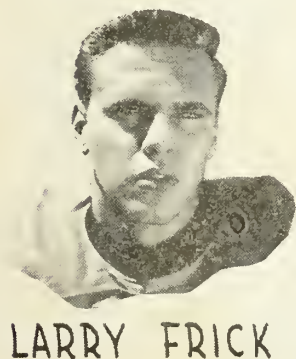
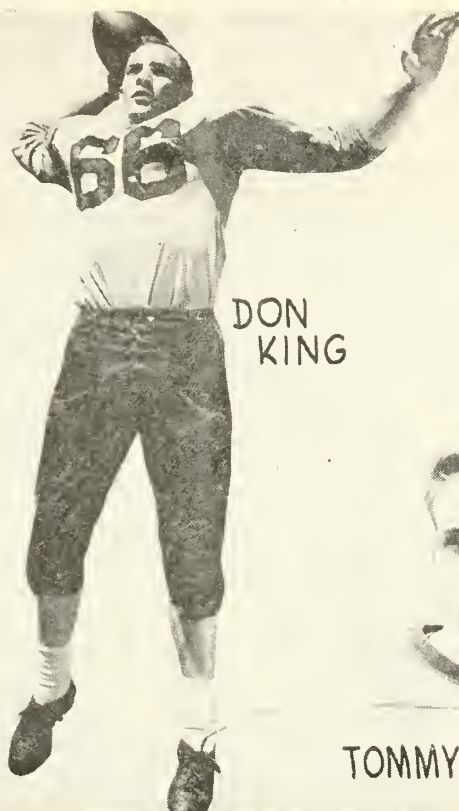
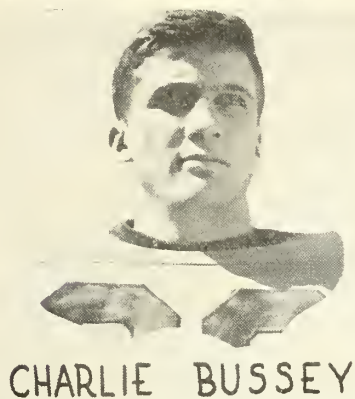


**Coca-Cola Bottling Company. Anderson, S. C.**

C. KIRBY HOOVER, Manager



# CLEMSON'S 1954 QUARTERBACKS



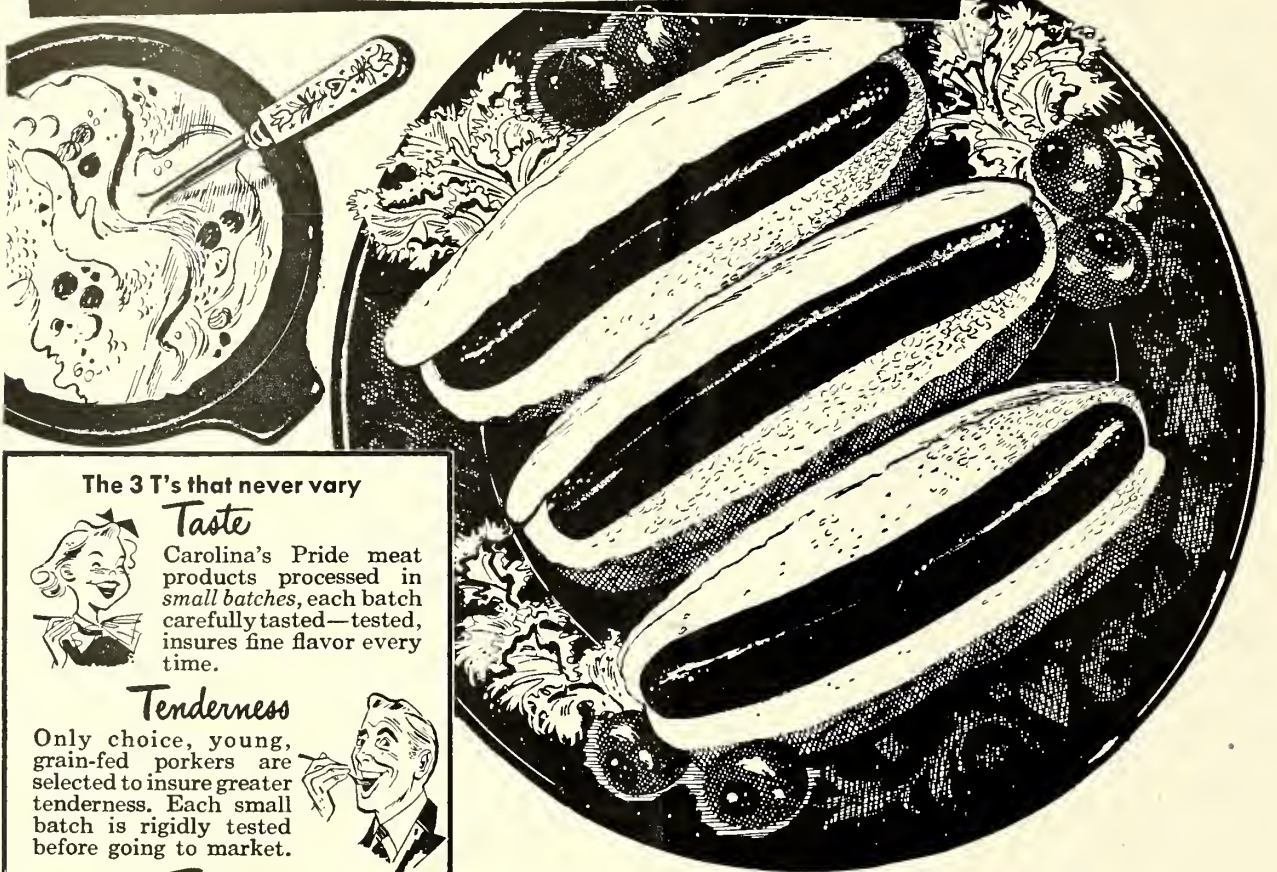
Compare Delicious PET Ice Cream



and

PET Homogenized Milk with Any Other

# BEST BET every time



### The 3 T's that never vary

#### Taste

Carolina's Pride meat products processed in *small batches*, each batch carefully tasted—tested, insures fine flavor every time.



#### Tenderness

Only choice, young, grain-fed porkers are selected to insure greater tenderness. Each small batch is rigidly tested before going to market.



#### Texture

Just as in the cakes you bake, no meat product can be a real treat without fine texture. Each small batch must pass our strict texture tests before it is labeled Carolina's Pride.



### DOUBLE YOUR MONEY BACK

Each time you buy a Carolina's Pride product, *you must be completely satisfied*. If and when we fail you, tear the label from the wrapper and mail it to us with a short letter telling us what you paid and why you are not satisfied. We'll send you **DOUBLE** your purchase price promptly. Carolina's Pride, Greenwood, S.C.

You're sure of satisfaction—every time when your choice of franks is Carolina's Pride

These popular Southern Franks, you see, are *not* mass-produced for the national market. Carolina's Pride Franks are processed right here in South Carolina—in *small batches*—which permits rigid control at every step.

What's more, the porkers are not a hodgepodge of all kinds of breeds from all over—each select pig is a special type, grain fed, and graded U.S. No. 1. The result is *uniformity*—always the same tempting flavor, always the same tender, lean meat.

That's our promise. If and when we fail you, tell us—and get your money back **DOUBLE**.

Try Carolina's Pride Sausage • Ham • Bacon • Little Links • Cold Meats

Greenwood Packing Company  
Greenwood, S. C.

## Carolina's Pride Meats



CLEMSON'S 1954 ENDS



HARRY HICKS



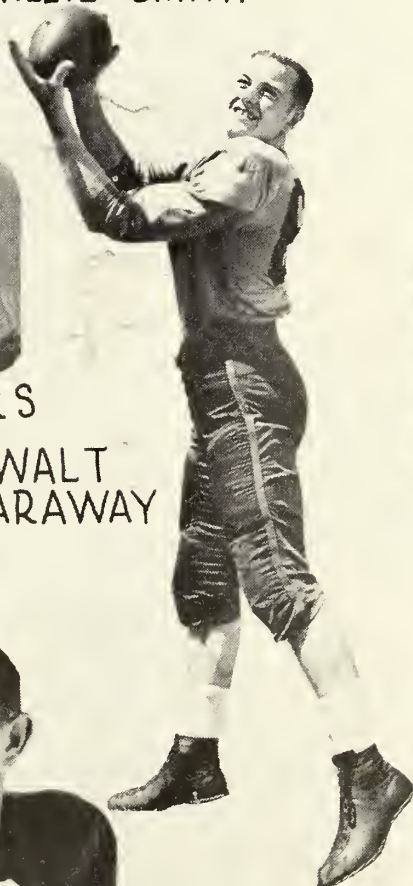
WILLIE SMITH



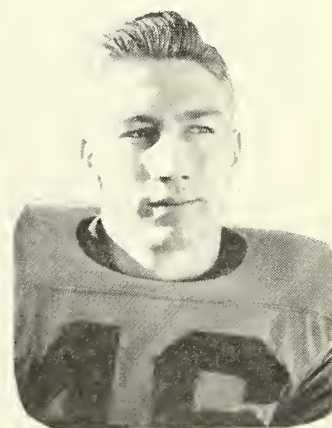
BILLY HUDSON



DALTON RIVERS



WALT LARAWAY



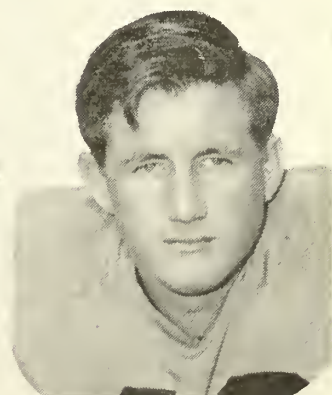
JOE BOWEN



PETE WALL



SCOTT JACKSON



RAY BOWICK

# CLEMSON'S 1954 FULLBACKS



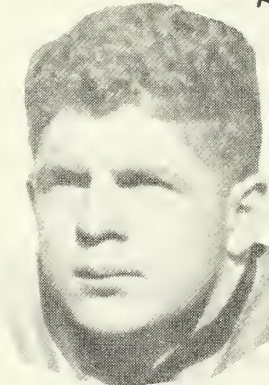
BILL  
O'DELL



NUEF ANKUTA



FRANK GRIFFITH



"RED" WHITTEN



CRIMMINS

HANKINSON



BOB SPOONER

WHEN IN COLUMBIA STOP AT

J. O. "CHINK" FREEMAN'S

Gervais and Huger  
Phone 4-9102

Esso Service

COLUMBIA  
S. C.



"WE KEEP 'EM ROLLING"

ROAD SERVICE



CLEMSON'S 1954 TACKLES



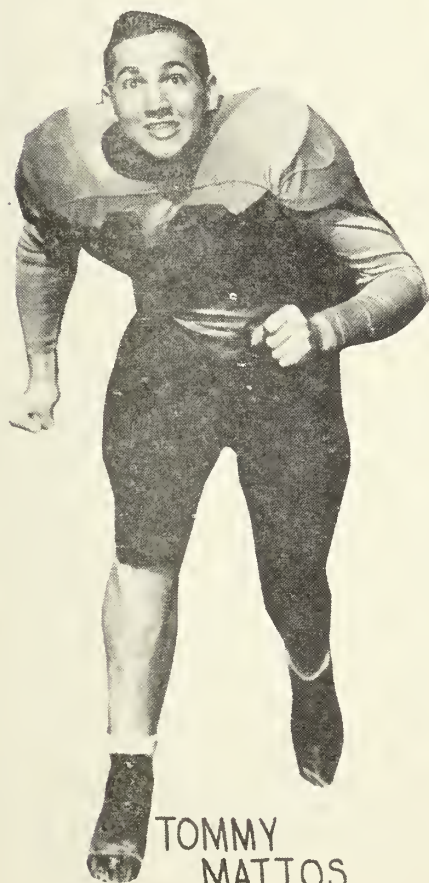
DICK MARAZZA



B.C. INABINET



CLYDE WHITE



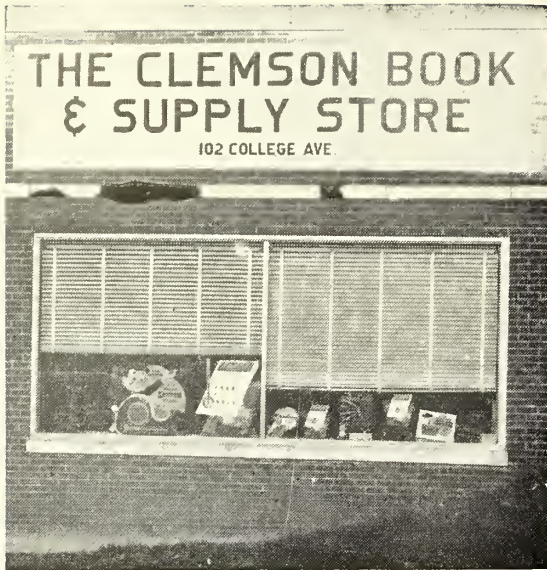
TOMMY  
MATTOS



TOMMY SEASE



WILLIS CRAIN



Two familiar old faces  
always welcome you  
back to the campus.

**CLEMSON BOOK STORE**  
Official College Book & Supply Store

**L. C. MARTIN DRUG COMPANY**  
Serving Clemson Men Since 1908



# CLEMSON'S 1954 GUARDS



MARK KANE



JOHNNY GREENE



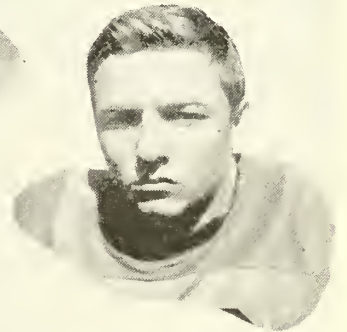
JERRY JACKSON



DONALD RHINEHART



DICK  
DE SIMONE



H. B. BRUORTON



EARL GREENE



LEON KALTENBACH



BUCK PRIESTER

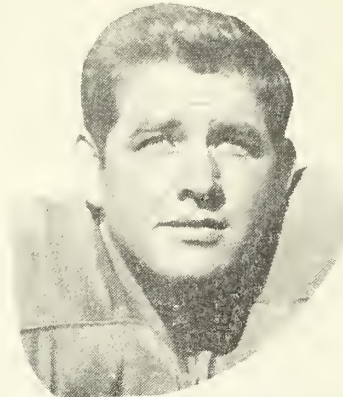


KENT MONROE

# CLEMSON'S 1954 CENTERS



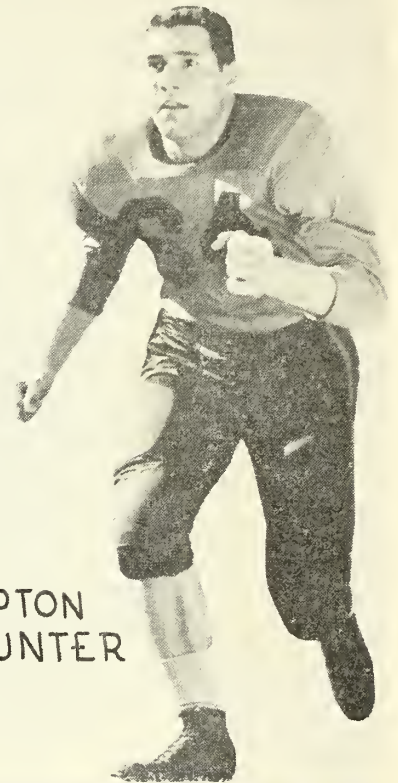
DINK STAPLES



BILL McLELLAN



WINGO AVERY



HAMPTON  
HUNTER

**LAUGHRIDGE'S, Inc.**

MAIN AT EARLE STREET

Anderson's Finest

HART SCHAFFNER and MARX  
CLOTHES

LEE and STETSON HATS

FREEMAN SHOES

VAN HEUSEN SHIRTS

**CLEMSON PHARMACY  
& BUS STATION**

1:30 to 5:00 O'Clock on Sunday  
7:00 a.m. to 8:30 p.m. Weekly

Fishing Equipment

Pipes

REVERE and EASTMAN  
Motion Picture Machines

Sandwiches & Fountain Service

**Morris & Company, Inc.**

WHOLESALE GROCERS

Serving Independent Retail  
Merchants in the Piedmont Section

**Morris & Company, Inc.**

PICKENS, SOUTH CAROLINA



# CUBS WIN ONE, LOSE THREE; DUKE HERE SATURDAY

Clemson's 1954 Freshmen footballers have shown much promise in their four games this fall despite the compilation of only a one-three record.

The victory, a 19-6 one over Wake Forest last Friday night on Memorial Stadium turf, saw the Cubs put on their best show of the year—offensively.

Two of the losses were by scores of 14-13 — to North Carolina State in the season-opener and to South Carolina the Wednesday night before "Big Thursday." Both were played on the road. The Cubs had two last quarter touchdowns called back at N. C. State.

Only decisive setback came at the hands of Georgia Tech, 20-0, and actually the game played in Atlanta was even most of the way. The Baby Engineers blocked a punt to set up their first touchdown in the third quarter and used a pair of final quarter 80-yard runs from scrimmage for the other two.

In games to date, Cub Coach Banks McFadden has relied consistently on quarterback Gene Crocker, halfbacks Bob Wright and Fletcher Carter and fullback Olin Hunter for most of the backfield duty.

Crocker passed for two TD's against N. C. State to ends Wyatt Cox and Bill Few—and he raced 70 yards for another against Wake Forest. Carter scored once against South Carolina and twice against Wake Forest to share touchdown-making honors with Crocker. Reserve quarterback Bobby Fisher scored the other Cub touchdown at Carolina.

A quintet of ends have shown up well although that position was first considered the shallowest. Don Hendrix, Whitey Jordan, Billy Breedlove, Few and Cox have all excelled.

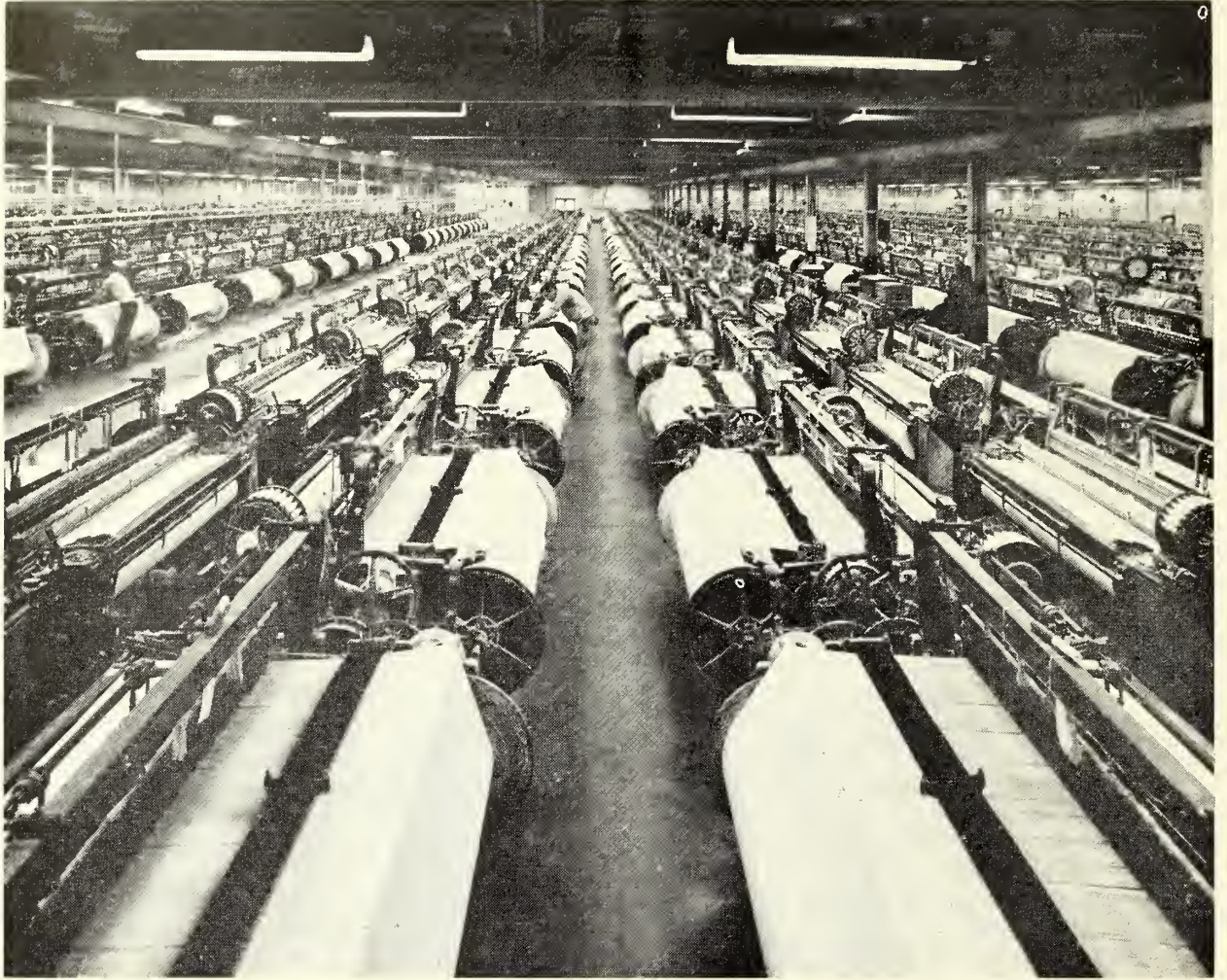
In the forward wall, Johnny Thomason and Jack Bush have started all games at tackle, with Jimmy Padgett and Charlie Lucas filling in; Bobby Giles, John Grdijan and Jim McCanless have done well at the guard positions; and at center, Talley Wright and Jim Pike have gained an edge on their rivals.

## FROSH RESULTS

Clemson 13 N. C. State 14  
 Clemson 0 Georgia Tech 20  
 Clemson 13 S. Carolina 14  
 Clemson 19 Wake Forest 6  
 Nov. 13—Duke, here

Name and Hometown	Pos.	Age	Ht.	Wt.
W. J. Allred, Belton	G	20	6-0	190
Bill Barbary, Taylors, S. C.	QB	18	6-3	195
Jimmy Bennett, Charleston, S. C.	T	17	6-2	215
Harry Bolick, Laurens, S. C.	HB	18	5-10	150
Billy Breedlove, Abbeville, S. C.	E	18	6-2	210
Jack Bush, Atlanta, Ga.	T	17	6-3	210
Fletcher Carter, Charleston, S. C.	HB	18	5-10	165
Wyatt Cox, Atlanta, Ga.	E	18	6-4	185
Gene Crocker, Gaffney, S. C.	QB	19	6-3	175
Terry Culpepper, Augusta, Ga.	G	19	5-11	215
Bob DeRose, Washington, Pa.	G	19	5-10	190
Bobby Fisher, Fairmont, N. C.	QB	18	6-5	190
Bill Few, Rock Hill, S. C.	E	20	6-0	175
Joe Frydrych, Trafford, Pa.	T	19	5-11	206
John Grdijan, Rillton, Pa.	G	24	5-11	195
Hubert Greene, Forest City, N. C.	HB	24	5-8	172
Norman Greene, Inman, S. C.	HB	17	6-2	180
Bob Giles, Charleston, S. C.	G	18	5-10	190
Kenneth Harper, Williamston, S. C.	HB	18	6-0	175
Don Hendrix, Wilmington, N. C.	E	19	6-2	205
Robert Hopkinson, Herminie, Pa.	QB	18	6-1	180
Olin Hunter, Central, S. C.	HB	18	5-9	170
Herman Jackson, Taylors, S. C.	T	18	5-11	220
Don Jones, Asheville, N. C.	E	18	5-10	175
Arthur Jordan, Wilmington, N. C.	C	18	6-2	200
Ronald Jordan, Florence, S. C.	E	18	6-0	185
Charlie Lucas, High Point, N. C.	T	18	6-3	245
Jim McCanless, Asheville, N. C.	G	18	6-1	210
Bill Neely, Rock Hill, S. C.	C	18	6-1	190
Kenneth Pace, N. Charleston, S. C.	T	19	6-2	225
Jimmy Padgett, Trenton, S. C.	FB	18	6-2	220
Jim Pike, Newnan, Ga.	C	19	5-10	195
Joseph Pilot, Rankin, Pa.	C	18	5-11	175
Edward Plauche, Parkersburg, W. Va.	T	18	6-0	195
Bill Rogers, Mullins, S. C.	HB	24	6-1	185
Jack Shoaf, Perryopolis, Pa.	G	18	6-0	200
Charlie Smith, Charleston, S. C.	T	18	6-0	205
Joe Stas, Whitney, Pa.	FB	19	5-10	195
Jack Steinbrecher, Huntington, W. Va.	C	18	6-2	200
Harold Strange, Columbia, S. C.	HB	18	6-0	190
Bill Thomas, Layton, Pa.	FB	20	6-0	206
Johnny Thomason, Olanta, S. C.	T	18	6-2	212
Bob Wright, Belton, S. C.	HB	22	6-0	170
Talley Wright, High Point, N. C.	C	18	6-0	195





Weave Shed of the Clemson Plant, Clemson, S. C.

## *11 times larger than this gridiron*

Imagine a cotton mill that covers 14 acres all under one roof . . . where the raw cotton goes in one end and packaged sheets come out the other . . . in a continuous quality-controlled operation.

That's the Clemson Plant of J. P. Stevens & Co., Inc., where the famous Stevens Utica-Mohawk Sheets and Pillow Cases are made.

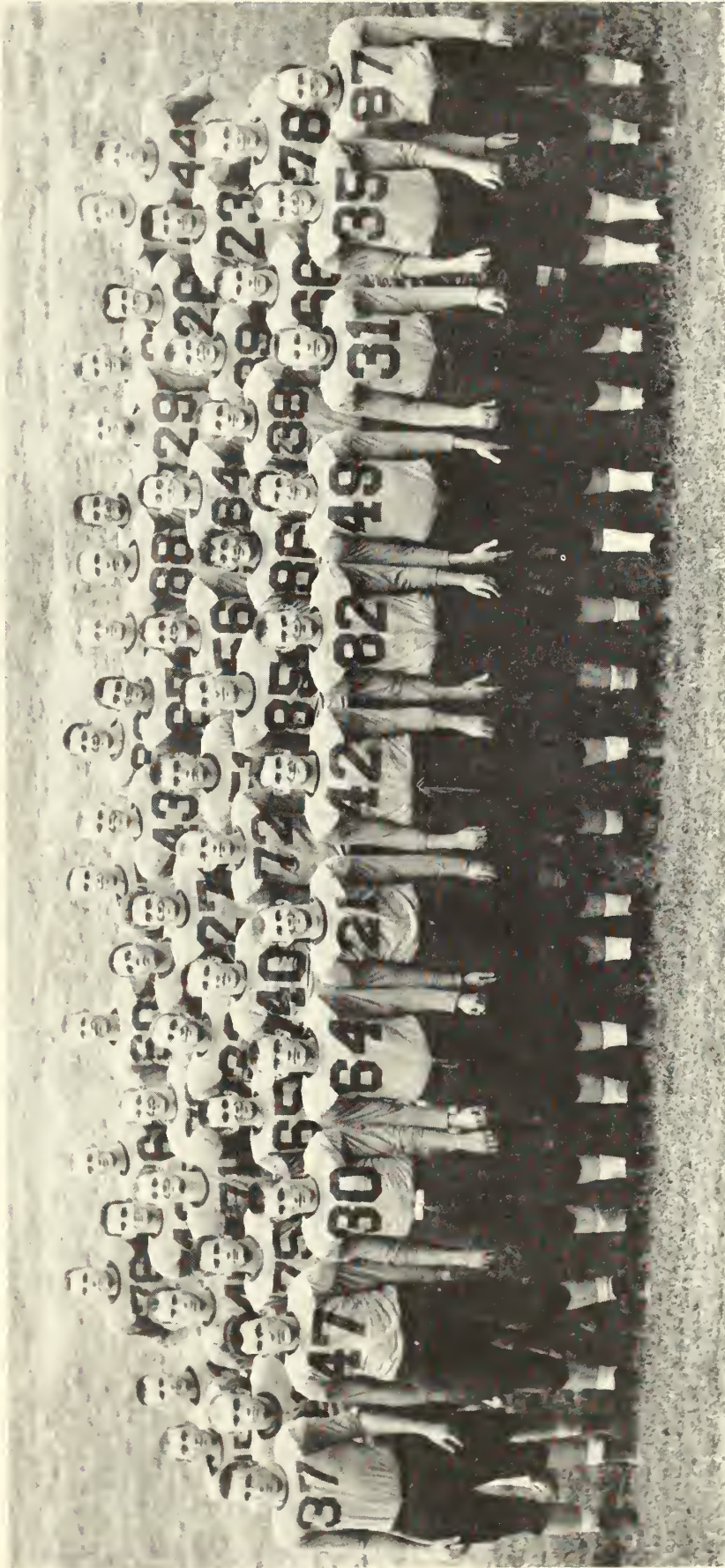


# **J. P. Stevens & Co., Inc.**

UTICA AND MOHAWK COTTON MILLS    CLEMSON, S. C.



# 1954 CLEMSON FRESHMEN



Front row (L to R): Charlie Smith, John Grdijan, Olin Hunter, Bob Giles, Fletcher Carter, Terry Culppepper, Don Jones, Bill Few, Joe Stas, Harold Strange, Hubert Greene. Second row: Jimmy Bennett, Len Tobias, Harry Bolick, Bill Barbary, Jack Bush, Bill Breedlove, Bill Allred, Norman Greene, M. J. Stansell, John Thomason. Third row: Jack Weir, Robert Hopkinson, Jack Steinbrecher, Edward Plauche, Bill Rogers, Herman Jackson, Talley Wright, Bill Neely, Jim Pilot, Jimmy Padgett. Fourth row: F. E. Pitts, Arthur Jordan, Whitey Jordan, Bill Thomas, Bobby Fisher, Blackie Wilson, Charlie Lucas, Ken Pace, Bob Wright, Jim McCanless. Back row: Don Hendrix, Gene Crocker, Lamar Cleghorn, Wyatt Cox, Joe Frydrich, Jim Pike, Bob DeRose, Jerry Atkins and Jack Shoaf.

# '54 CLEMSON STATISTICS

## SIX-GAME RECORD . . . .

Clemson 33	Presbyterian 0
Clemson 7	Georgia 14
Clemson 7	Virginia Tech 18
Clemson 14	Florida 7
Clemson 8	South Carolina 13
Clemson 32	Wake Forest 20

## INDIVIDUAL STATISTICS . . . .

	Rushing		Passing			Totals	
	Plays	Net	Att.	Com.	Gain	Plays	Gain
King	27	-14	44	24	367	71	353
Wells	40	141	1	1	81	41	222
Ankuta	26	179	0	0	0	26	179
Pagliei	37	151	1	0	0	38	151
George	23	148	0	0	0	23	148
Coleman	29	136	0	0	0	29	136
Bussey	29	19	16	4	71	45	90
O'Dell	31	81	0	0	0	31	81
Hankinson	15	76	0	0	0	15	76
Griffith	7	41	0	0	0	7	41
Whitten	8	28	0	0	0	8	28
Ross	7	10	2	0	0	9	10
Totals	283	984	67	30	531	350	1515

## TEAM STATISTICS . . . .

TEAM STATISTICS . . .	Clem.	W.F.	Clem.	Opps.
First downs rushing	10	5	64	37
First downs passing	4	6	17	20
First downs penalties	0	1	4	6
Total first downs	14	12	85	63
Rushing attempts	44	34	283	242
Net yards rushing	161	69	984	529
Passes attempted	10	16	67	92
Passes completed	5	10	30	46
Passes had intercepted	1	0	9	6
Net yards passing	115	132	531	548
Total number plays	54	50	350	334
Net yards gained	276	201	1515	1077
Number times punted	2	6	24	44
Punt average	52	41.3	37	35.7
Punts returned	4	1	18	11
Average punt return	26.5	6	16.7	7.5
Kickoffs returned	4	6	15	23
Average kickoff return	15.8	16.7	16.3	16.7
Yards lost penalties	43	25	322	410
Fumbles lost	1	0	12	8
Touchdowns rushing	4	1	11	7
Touchdowns passing	1	2	4	4
Total touchdowns	5	3	15	11
Safeties	0	0	2	0
Extra points	2	2	7	6
Total points	32	20	101	72

## SCORING

	TD	P.A.T.	Pts.
Coleman	5	0	30
Pagliei	3	0	18
Paredes	0	7	7
King	1	0	6
Jackson	1	0	6
Hicks	1	0	6
George	1	0	6
Ankuta	1	0	6
Moore	1	0	6
Laraway	1	0	6
White	0	0	2*
Smith	0	0	2*
Totals	15	7	101

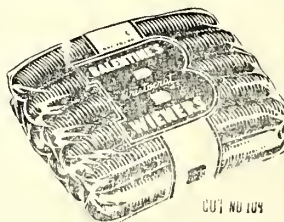
## RECEIVING

	Caught	Yds	TD
Jackson	9	140	1
Pagliei	5	132	1
Laraway	5	95	1
Hicks	4	81	1
Coleman	3	46	0
Moore	1	28	0
Wells	1	10	0
Griffith	1	5	0
Smith	1	4	0
Totals	30	531	4

\* Safety



**DUKE POWER COMPANY**  
*Serving the Piedmont Carolinas*



Enjoy the Best!

Enjoy **BALENTINE'S**

The package with the BIG BLACK "B"

Anderson's Oldest and Finest Men's Shop

MICHAEL-STERN SUITS

NUNN-BUSH SHOES

MANHATTEN SHIRTS

DOBBS HATS

**BYER'S MEN'S SHOP**

110 N. MAIN STREET

ANDERSON, S. C.





CLEMSON CHEERLEADERS FOR 1954-55 are (1st row, left to right): Fletcher Smoak, Frank Way, Dick Flowers, Orlando Perez and John Duffie. On the 2nd row are Jimmy Humpries, Powers McElveen, George Bennett, Les McGraw and Jimmy Jones. Missing when picture was taken was Eddie Mathews.

## STONE BROTHERS



Complete Outfitters to  
Men, Young Men, and Students



108 North Main Street  
GREENVILLE, S. C.

## WHILE IN CLEMSON VISIT . . . CLEMSON CAFETERIA

»»

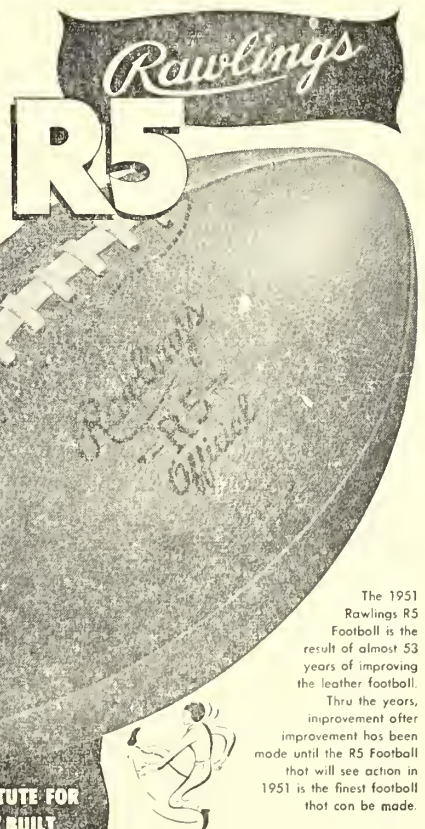
MEALS AND SHORT ORDERS

»»

Y.M.C.A. BUILDING

OPEN TO THE PUBLIC 6:00 - 11:00

Football's  
Famous  
Favorite!



THERE IS NO SUBSTITUTE FOR  
THE "KNOW-HOW" BUILT  
INTO EVERY R5 FOOTBALL!

The 1951 Rawlings R5 Football is the result of almost 53 years of improving the leather football. Thru the years, improvement has been made until the R5 Football that will see action in 1951 is the finest football that can be made.

RAWLINGS MANUFACTURING CO.  
"The Finest In The Field"  
ST. LOUIS 3, MO.



# Clemson is Rebuilding in Basketball

Clemson's basketball team took a nosedive last winter after experiencing better-than-average success over a period of five years, but Coach Banks McFadden has what he thinks will be the remedy in the near future — namely, promising talent.

McFadden, who was a first team, All-America selection in 1939 in sparking Clemson to the Southern Conference championship, has one of the nation's sharpest shooters on hand for varsity play this winter in Bill Yarborough. Other lettermen returning to action are Tommy Smith, Bruce Holzschuh, Buddy Shook, Barry Ryan, Ben Crosland, "Doc" Morgan, and Billy Riser.

Up from last winter's freshman basketball team are "Rock" Stone, Dave Bauman, Bill Landers and Don Shealy.

And among the incoming freshmen are several outstanding players. They include: Carl Reamer of Philadelphia, Pa.; Eddie Attenberger of Greensburg, Pa.; Billy Williams of Moundsville, W. Va.; Jack Yockel of Jersey City, N. J.; Eddie Moncrief of Moultrie, Ga.; Francis Brothers of Greenville, S. C.; Raymond Strock of Cope, S. C.; and Dick Yeary of Nicholasville, Ky.

Facing perhaps their roughest basketball schedule in history in 1954-55, the Tigers aren't expected to climb much; however, in the next year or two, Clemson should give a good account of itself on the hardwood.

## 1954-55 BASKETBALL SCHEDULE



- Dec. 1—Presbyterian, home
- Dec. 3—Duke, away
- Dec. 4—North Carolina, away
- Dec. 7—Georgia, away
- Dec. 14—North Carolina State, home
- Dec. 17—Virginia, home
- Jan. 3—Tennessee, away
- Jan. 4—Tennessee Tech, away
- Jan. 8—Maryland, home
- Jan. 11—Duke, home
- Jan. 15—North Carolina, home
- Jan. 18—South Carolina, home
- Jan. 29—Furman, home
- Feb. 1—Presbyterian, away
- Feb. 4—Wake Forest, away
- Feb. 5—North Carolina State, away
- Feb. 14—Virginia, away
- Feb. 15—Maryland, away
- Feb. 18—South Carolina, away
- Feb. 22—Georgia, home
- Feb. 24—Furman, away
- Feb. 26—Wake Forest, home
- Mar. 3-5—Atlantic Coast Conference playoffs.

# Here's the CAPTAIN of our team—



The captain of every Capital flight is backed by an experienced team of flight personnel and other specialists. That's why more than sixty top college and professional athletic teams, including CLEMSON COLLEGE, count on Capital for efficient, economical Special Flight Service.

You, too, can save time and money by flying . . .





**Capital  
AIRLINES**

*More athletic teams fly Capital than any other airline!*



# MAMMY'S KITCHEN



For delicious food served  
the way you like it, visit us  
before and after the games



# MAMMY'S KITCHEN

105 N. MAIN ST.      ANDERSON, S. C.



"Nice having the old grads back!"

## Anyone Can Score a Touchdown! In SENECA, It's

Done By Those Shoppers Who Patronize The Following Businesses

Abbott's Mens Shop

Oconee Office Supply

Ed Waters Chevrolet Co.  
Buick — Chevrolet

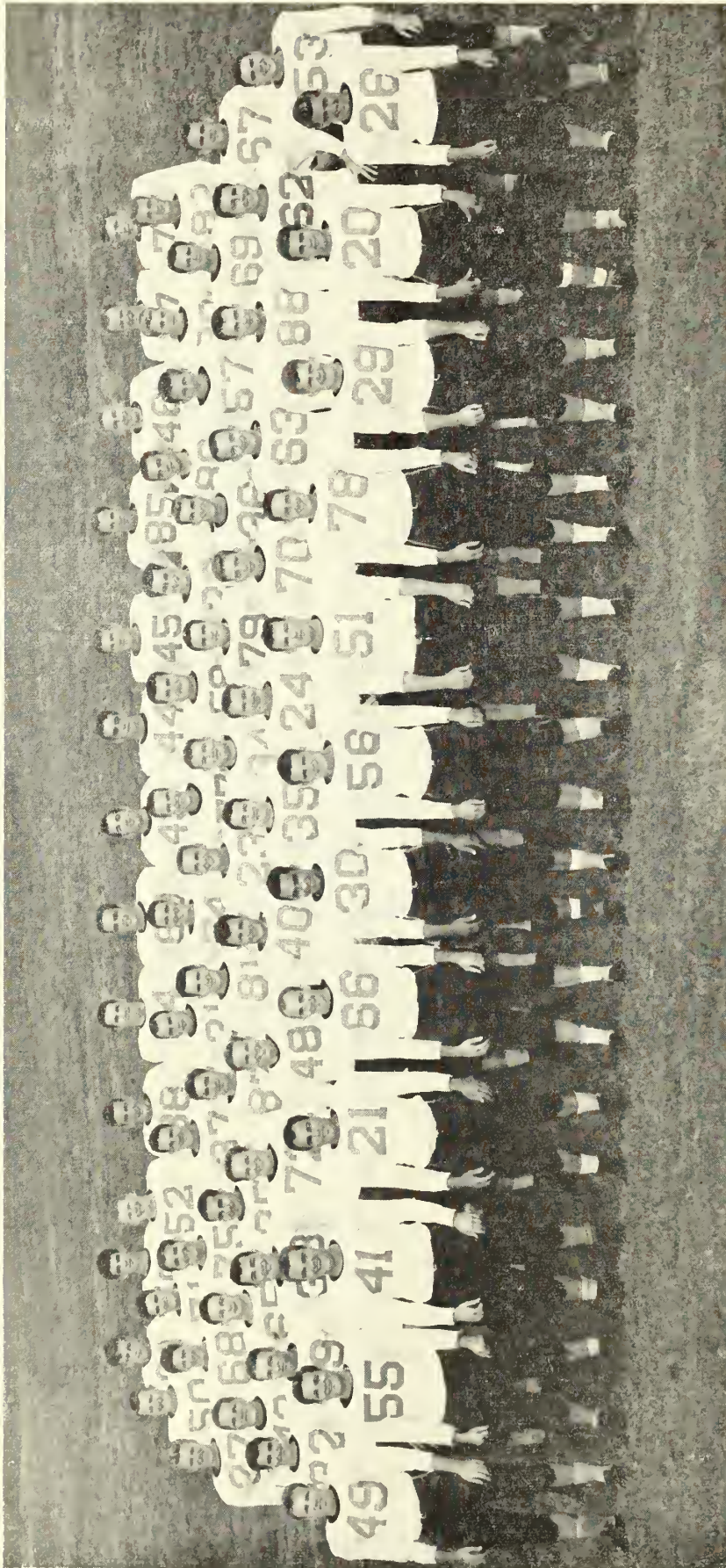
Ross Builders Supplies, Inc.



LET'S GO, TIGERS!



# 1954 CLEMSON TIGERS 1955



Front row: Ken Moore, Lem McLendon, Nolten Hildebrand, Bob Paredes, Don King, Buck George, Mark Kane, Clyde White, Scott Jackson, Red Whitten, Charley Bussey, "Shot" Rogers. Second row: Fred Gisewhite, H. B. Bruorton, Harry Lifrage, Johnny Greene, Neuf Ankuta, Joe Pagliel, Don Rhinehart, Wingo Avery, Joel Wells, Walt Laraway, Jerry Jackson, Harry Hicks, Doug Thompson. Third row: Leon Kaltenbach, Buck Priestler, Dick DeSimone, Earl Greene, Dink Staples, Crimmins Hankinson, Bob Spooner, Johnny Tice, Tommy Williams, Ray Bowick, Jack Holland, Bill O'Dell. Fourth row: Tommy Sease, Donnie Buntion, Bill McLellen, Bob Mooneyhan, Frank Griffith, Sonny King, Larry Frick, Bill Toth, Vernon Carlton, Kent Moore, Mike Corrigan, Don Ross. Back row: Bill Cromer, Harold Thompson, Ben Kisam, Ed Bryant, Dick McKellar, Dalton Rivers, Hampton Hunter, B. C. Inabinet, Tommy Mattos, Dick Marazza, Billy Hudson, Pete Wall, Joe Bower, Willis Crain, and Willie Smith. (Absent when picture was taken were Jim Coleman, Joe Rauser and Jim Fox)



## Clemson Football Network...

Only an expert radio announcer will be able to follow Clemson's tricky T-formation in 1954, so, naturally, Jimmy Coggins, dean of South Carolina's football play-



by-play commentators, was signed by the new Clemson Football Network to broadcast the Tigers' schedule.

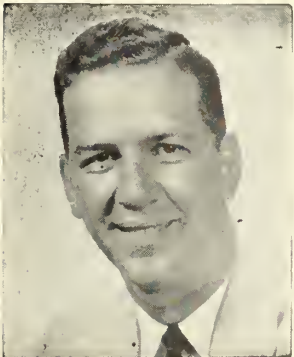
Coggins, owner of Newberry Radio Station WKDK, is an old hand at doing the play-by-play of Clemson football games. He followed the Tigers with mike in hand through the 1936-37-38 seasons and was back with them again in 1947-48-49. In 1948, Jimmy was present for

11 straight Clemson victories, including a thrilling 24-23 decision over Missouri in the Gator Bowl.

In more recent years, 1950-51-52, Coggins has done the play-by-play for Radio Station WIS and their "Game of the Week" broadcast. Last fall, the "dean" did the play-by-play of the North Carolina-South Carolina game in addition to many of the Newberry College contests.

Jimmy Coggins broke into radio 20 years ago with WSPA in Spartanburg, worked at WAIM in Anderson, at Cochran's Jewelry Store in Anderson and with Uncle Sam during World War II before going to Newberry as part owner of WKDK in 1949. He took over as full owner in 1952. Coggins has also been half owner of Union Radio Station WBCU for the past year and a half.

Ed Osborne, director of both the Clemson News Bureau and sports publicity office from 1947 through the spring of 1950, is one of the best qualified men in South Carolina to discuss Clemson football or football in general.



His genial personality and clear speaking voice will keep all listeners of Clemson games well filled in with hidden details of the action.

Osborne's radio experience consists of a three-year stay at Radio Station WMSC in Columbia as sales representative and sports director. Since early 1953, Ed has been co-owner, presi-

dent and manager of Radio Station WBCU in Union.

Genuinely interested in football and the fortunes of Clemson, Osborne was the natural choice to work with Coggins in broadcasting the Clemson schedule in 1954.

## SEASTRUNK ELECTRIC COMPANY

COLUMBIA, SOUTH CAROLINA



LIGHTING FIXTURES  
ELECTRICAL CONTRACTORS  
POWER LINE CONSTRUCTION



## GREENVILLE ICE CREAM COMPANY

711 W. Washington Street

Greenville, South Carolina



J. E. SIRRINE COMPANY

*Engineers*

GREENVILLE, SOUTH CAROLINA



## '53 Player Statistics . . .

<b>RUSHING</b>	<b>Att.</b>	<b>Yds.</b>	<b>Lost</b>	<b>Net</b>	<b>Avg.</b>
King, qb	79	350	107	243	3.1
Whitten, fb	42	243	5	238	5.7
O'Dell, rh	42	235	2	233	5.5
Wells, lh	42	213	11	202	4.8
Pagliei, rh	35	208	22	186	5.3
George, lh	35	205	20	185	5.3
Hankinson, fb	34	132	2	130	3.8
Ross, fb	34	129	0	129	3.8
Gressette, fb	19	88	2	86	4.5
Williams, qb	22	72	12	60	2.7
Moore, rh	18	71	11	60	3.3

<b>PASSING</b>	<b>Att.</b>	<b>Com.</b>	<b>I</b>	<b>TD</b>	<b>Yds.</b>	<b>Pct.</b>
King, qb	98	46	11	5	706	46.9
Williams, qb	33	9	3	2	181	27.3
Calvert, qb	10	5	1	0	71	50.0

<b>RECEIVING</b>	<b>No.</b>	<b>Yds.</b>	<b>TD</b>	<b>Avg.</b>
Gaskin, le	21	426	5	20.3
Jackson, re	15	252	2	16.8
Laraway, le	4	86	0	21.5
Wells, lh	4	25	0	6.3
Pagliei, rh	3	53	0	17.7
O'Dell, rh	3	31	0	10.3
Bowen, re	3	28	0	9.3
George, lh	2	5	0	2.5

<b>SCORING</b>	<b>TD</b>	<b>EPA</b>	<b>EPM</b>	<b>FG</b>	<b>Pts.</b>
Gaskin, le	5	0	0	0	30
King, qb	3	0	0	0	18
Jackson, re	3	0	0	0	18
George, lh	2	0	0	0	12
O'Dell, rh	2	0	0	0	12
Ross, fb	2	0	0	0	12
Hankinson, fb	1	0	0	0	6
Pagliei, rh	1	0	0	0	6
Wells, lh	1	0	0	0	6
Williams, qb	1	0	0	0	6
Hubert, qb	0	9	6	0	6
Shown, fb	0	6	5	0	5
Gressette, fb	0	4	2	0	2
Whitten, fb	0	1	1	0	1

<b>PUNTING</b>	<b>No.</b>	<b>Yds.</b>	<b>TD</b>	<b>Avg.</b>
Pagliei, rh	11	415	0	37.7
King, qb	18	668	0	37.1
Shown, fb	3	121	0	40.3
Hubert, qb	5	174	0	34.8
George, lh	5	150	0	30.0

<b>PUNT RETURNS</b>	<b>No.</b>	<b>Yds.</b>	<b>TD</b>	<b>Avg.</b>
Jackson, re	1	41	1	41.0
Bowen, re	1	25	0	25.0
King, qb	4	36	0	9.0
George, lh	2	12	0	6.0

<b>PASS INTER-CEPTIONS</b>	<b>No.</b>	<b>Yds.</b>	<b>TD</b>	<b>Yds.</b>
Moore, rh	2	85	0	42.5
Hankinson, fb	2	10	0	5.0
Hildebrand, lg	2	7	0	3.5
King, qb	2	0	0	0.0
Williams, qb	1	8	0	8.0
Ross, fb	1	6	0	6.0
Hunter, c	1	5	0	5.0

Compliments of  
**Champion  
Knitwear Co., Inc.**

**ROCHESTER, N. Y.**



**Manufacturers of Athletic Knit  
Goods for Colleges and Schools**



**CHAMPION PROCESSED SPORTWEAR**

**WITH CLEMSON DESIGNS SOLD BY**

**HOKE SLOAN at CLEMSON**

**Before Disaster Strikes  
Be SURE of Your Insurance  
with**

**Lawrence & Brownlee  
Agency**

**Southern Insurance Specialists**

**Telephone 5-8221 — 122 N. Main Street**

**ANDERSON, S. C.**



**"BETTER BE SAFE THAN SORRY"**



**Complete Fire, Casualty & Bond Coverage**



“Cheer up, Vernon, we won’t have these delays when we get McLean service!”



**M'CLEAN**  
TRUCKING COMPANY

General Offices • Winston-Salem, N. C.

“WE PULL FOR INDUSTRY”



# Facts in a Hurry . . .

## RETURNING LETTERMEN (23)

**Ends:** Joe Bowen, Scott Jackson, Walt Laraway, Pete Wall.  
**Tackles:** B. C. Inabinet, Tommy Mattos, Clyde White.  
**Guards:** Nolten Hildebrand, Mark Kane, Buck Priester.  
**Centers:** Wingo Avery, Hampton Hunter, Bill McLellan.  
**Quarterbacks:** Don King, Bob Paredes, Don Ross, Tommy Williams.  
**Left Halfback:** Buck George.  
**Right Halfbacks:** Ken Moore, Joe Pagliei.  
**Fullbacks:** Crimmins Hankinson, Bill O'Dell, "Red" Whitten.

## 1953 LETTERMEN LOST (12)

**Ends:** Dreher Gaskin.  
**Tackles:** Nathan Gressette.  
**Guards:** Gene Garrison, Joe LaMontagne, Ormond Wild, Charlie Wyatt.  
**Centers:** Andy Small.  
**Quarterbacks:** Forrest Calvert, Pooley Hubert.  
**Left Halfbacks:** Jimmy Wells.  
**Right Halfbacks:** None  
**Fullbacks:** Lawrence Gressette, Jack Shown.

## 1953 RESULTS

Clemson	33	Presbyterian	7
Clemson	14	Boston College	14
Clemson	0	Maryland	20
Clemson	7	Miami	39
Clemson	7	South Carolina	14
Clemson	18	Wake Forest	0
Clemson	7	Georgia Tech	20
Clemson	34	The Citadel	13
Clemson	19	Auburn	45

## 1953 ALL-OPPONENTS

LE—Jim Pyburn, Auburn sophomore  
 LT—Stanley Jones, Maryland senior  
 LG—Frank Mincevich, South Carolina junior  
   C—Larry Morris, Georgia Tech junior  
 RG—Jake Shoemaker, Georgia Tech, junior  
 RT—Bob Bartholomew, Wake Forest sophomore  
 RE—Clyde Bennett, South Carolina senior  
 QB—Bernie Faoney, Maryland senior  
 LH—Chester Hanulak, Maryland senior  
 RH—Billy Teas, Georgia Tech junior  
 FB—Ralph Felton, Maryland senior

## CLEMSON'S ALL-AMERICANS

1939	-----	Banks McFadden, tailback
1940	-----	Joe Blalock, end
1941	-----	Joe Blalock, end
1948	-----	Bobby Gage, safety
1950	-----	Jackie Calvert, safety

## CLEMSON'S BOWL RECORD

1940	Cotton Bowl—Clemson 6	Boston College 3
1949	Gator Bowl—Clemson 24	Missouri 23
1951	Orange Bowl—Clemson 15	Miami 14
1952	Gator Bowl—Clemson 0	Miami 14

## CLEMSON'S PROS OF 1954

Fred Cone—Green Bay fullback (fourth year)  
 Dreher Gaskin—Detroit end (first year)  
 Bob Hudson—Philadelphia end (fourth year)  
 Ray Mathews—Pittsburgh halfback (fourth year)

## KEYS PRINTING COMPANY

Established 1869

85 YEARS OF SERVICE

PRINTING            RULING            BINDING  
 LITHOGRAPHING            ENGRAVING

Telephone 2-5301

GREENVILLE, SOUTH CAROLINA

## JOIN IPTAY

and see

## HOKE SLOAN

An Old Clemson Man

Selling Gent's Furnishings

to Clemson Men at The Right Price

CLEMSON            SOUTH CAROLINA

The Products of . . .

## AMERICAN BAKERIES

Are Unequaled



Bakers of Delicious, Wholesome

## MERITA

## Bread and Cakes



## AMERICAN BAKERIES COMPANY

ANDERSON, SOUTH CAROLINA

## CLEMSON'S TIGERS

"The Best in Sportsmanship"

## ANDERSON, S. C.

Clemson's Best Friend"

## CAROLINA

## NATIONAL BANK

"The Best in Banking"



"ANDERSON'S HOME OWNED BANK"



Two convenient locations:

Main Office  
On the Square

Drive-In Branch  
1510 N. Main St.

"PLAY BALL" with TOM SLATE  
For Health's Sake — "It Pays To Play"

Complete Line of  
GOLF TENNIS BASEBALL  
FOOTBALL BASKETBALL  
SOFTBALL EQUIPMENT, ETC.

- PENNSYLVANIA
- RAWLINGS
- SPALDING
- VOIT RUBBER COMPANY

**TOM SLATE**  
**Athletic Equipment Co.**

592 Peachtree Street, N.E.

**ATLANTA, GEORGIA**

TED ZUBER, Representative  
TOM GROOVER JACK GLOVER

Refresh Without Filling . . .



**TERRY BOTTLING CO., ANDERSON, S. C.**



# It's a Record . . .

## TEAM — GAME

Most points, 122 (Guilford, 1901)  
Greatest victory margin, 122-0 (Guilford, 1901)  
Greatest defeat margin, 7-74 (Alabama, 1931)  
Most first downs, 23 (Auburn, 1951)  
Most rushing plays, 76 (South Carolina, 1940)  
Most yards rushing, 516 (Presbyterian, 1945)  
Most TD passes, 4 (Auburn, 1947)  
Most passes attempted, 32 (Florida, 1929)  
Most passes completed, 16 (Auburn, 1951)  
Most yards passing, 280 (Furman, 1947)  
Most passes intercepted, 5 (South Carolina, 1940)  
Most passes had intercepted, 6 (Florida, 1952; Auburn, 1953)  
Most plays, run and pass, 90 (South Carolina, 1940)  
Most yards, run and pass, 597 (Presbyterian, 1945)  
Most punts, 17 (South Carolina, 1943)

## INDIVIDUAL — GAME

Most TD's, 4 (Fred Cone vs Auburn, 1950)  
Most TD passes, 4 (Bobby Gage vs Auburn, 1947)  
Most TD's run and pass, 5 (Bobby Gage vs Auburn, 1947)  
Most TD passes caught, 3 (Dreher Gaskin vs Auburn, 1953)  
Most yards rushing, 234 (Don King vs Fordham, 1952)  
Best rushing average, 30.3 (Bobby Gage netted 182 yards in 6 tries vs Presbyterian, 1947)  
Most pass completions, 15 (Billy Hair vs Auburn, 1951)  
Most yards passing, 245 (Bobby Gage vs Furman, 1947)  
Most offensive plays, 45 (Billy Hair vs Auburn, 1951)  
Most yards run and pass, 374 (Bobby Gage vs Auburn, 1947)  
Most passes caught, 10 (Henry Walker vs Auburn, 1947)  
Most yards pass receiving, 148 (Henry Walker vs Auburn, 1947)  
Most punts, 13 (Marion Butler vs Wake Forest, 1942)  
Most punt returns, 10 (Shad Bryant vs Furman, 1939)  
Most yards punt returns, 101 (Bobby Gage in 3 tries vs N. C. State, 1948)

## INDIVIDUAL — SEASON

Most TD's, 15 (Fred Cone, 1950)  
Most TD passes, 11 (Bobby Gage, 1948)  
Most TD's run and pass, 17 (Bobby Gage, 1947)  
Most TD passes caught, 7 (Glenn Smith, 1951)  
Most extra points, 38 (Jack Miller, 1948)  
Most rushing attempts, 184 (Fred Cone, 1950)  
Most yards rushing, 845 (Fred Cone, 1950)  
Best rushing average, 7.2 yards (Billy Poe netted 380 yards in 53 tries in 1945)  
Most pass attempts, 164 (Billy Hair, 1951)  
Most pass completions, 67 (Billy Hair, 1951)  
Most yards passing, 1004 (Billy Hair, 1951)  
Most offensive plays, 324 (Billy Hair, 1951)  
Most yards run and pass, 1702 (Billy Hair, 1951)  
Most passes caught, 39 (Glenn Smith, 1951)  
Most yards pass receiving, 632 (Glenn Smith, 1951)  
Most passes intercepted by, 7 (Fred Knoebel, 1951)  
Most punts, 73 (Marion Butler, 1942)  
Best punting average, 43.5 (Banks McFadden for 65 punts, 1939)  
Most punt returns, 31 (Shad Bryant, 1939)  
Most yards punt returns, 487 (Shad Bryant in 27 tries, 1938)

Compliments of

## DIXIE-HOME STORES

Where You Get

THE BEST FOR LESS . . . PLUS

S & H GREEN STAMPS

THE HOUSE OF QUALITY

Serving South Carolina Businesses  
and Schools Since 1844

The R. L. Bryan Company

1440 MAIN STREET

COLUMBIA, SOUTH CAROLINA

Sullivan Hardware Co.

ANDERSON, S. C.

SPORTING GOODS — FARM IMPLEMENTS

HOUSEHOLD WARE — GIFTS



Serving This Section 69 Years

We want to be . . .

Your Headquarters in South Carolina  
for Office Machines, Equipment & Supplies

with 4 stores to serve you

- ANDERSON
- GREENWOOD
- GREENVILLE
- SPARTANBURG

*Harper Brothers*  
INC.

OFFICE MACHINES • EQUIPMENT • SUPPLIES

# DUCKETT FUNERAL HOME

Courteous and Reliable Service

FUNERAL      AMBULANCE

Central, South Carolina

JOHN G. DUCKETT, Class of '18

## S. A. KOTT COMPANY

MAKERS OF

Esko and Archdale

SPORTSWEAR

Belton, South Carolina



AVAILABLE AT ALL BELK STORES

## CHEATHAM      GREENVILLE HARDWARE CO.

Serving You from Two Convenient Locations  
with a complete line of

### Hardware and Paints

FREE AND EASY PARKING

201 Buncombe St.

648 S. Main St.

Greenville, South Carolina

## 1954 Composite Schedule

TEAM	Week of Sept. 18	Week of Sept. 25	Week of Oct. 2	Week of Oct. 9	Week of Oct. 16	Week of Oct. 23	Week of Oct. 30	Week of Nov. 6	Week of Nov. 13	Week of Nov. 20	Week of Nov. 27
Presbyterian Clemson Clemson*		Furman Greenville (1st)*	Davidson Clinton (8th)*	Wofford Spartanburg* Charleston	Citadel Charleston	Catawba Salisbury*	Stetson Clinton (5th)*	Appalach. St. Boone, N. C.*			Newberry Clinton (25th)
Georgia	Fla. State Tallahassee*	Clemson Athens	Texas A&M Athens	Vanderbilt Athens	Tulane New Orleans	Alabama Birmingham	Florida Jacksonville	Auburn Columbus, Ga.			Georgia Tech Athens
Virginia Tech	N. C. State Blacksburg	Wake Forest Richmond	Clemson Blacksburg	Richmond Richmond*	Virginia Roanoke	W. & M. Blacksburg	Geo. Wash. Alexandria	Waynesburg Blacksburg			V. M. I. Roanoke (25th)
Florida	Rice Houston*	Ga. Tech. Atlanta	Auburn Gainesville	Kentucky Gainesville	L. S. U. Baton Rouge*	Miss. State Gainesville	Georgia Jacksonville	Tennessee Knoxville			Miami Gainesville
South Carolina†		Army West Point	West Va. Columbia*	Furman Greenville	Clemson Columbia (21st)	Maryland Columbia	U. N. C. Chapel Hill	Virginia Columbia			Wake Forest Columbia
Wake Forest		Va. Tech. Richmond	N. C. State Wake Forest	Maryland W.-Salem	Geo. Wash. Washington (15th)	U. N. C. Chapel Hill	Clemson Charlotte	Richmond Richmond			W. & M. Blacksburg
Furman	Newberry Greenville (17th)*	Miami Greenville (24th)*	Presbyterian Greenville (1st)*	S. Carolina Greenville	Citadel Greenville	Davidson Charlotte (22nd)*	N. C. State Raleigh*	Clemson Greenville			Florida St. Tallahassee
Maryland	Kentucky Lexington	U.C.L.A. Los Angeles (1st)*	U.C.L.A. Los Angeles (1st)*	Wake Forest W.-Salem	U. N. C. Chapel Hill	Miami Miami (22nd)*	S. Carolina Columbia	N. C. State College Park			Geo. Wash. College Park (25th)
Auburn		Chattanooga Auburn	Florida Gainesville	Kentucky Lexington*	Georgia Tech Atlanta	Florida St. Auburn	Tulane Mobile	Miami Birmingham			Alabama Birmingham
The Citadel‡		Elon Charleston	Davidson Charleston*	Richmond Charleston	Furman Greenville	P.C. Charleston	Wofford Orangeburg (29th)	V. M. I. Lexington			Clemson Clemson

\* Night games      † South Carolina and The Citadel play each other on Saturday, Dec. 4.



Trailways takes you

**ALL THE WAY!**



*Ride New*

**AIR-SUSPENSION**

# **TRAILWAYS THRU-LINERS**

★ You board and leave your Trailways bus right in the heart of town—so simple and convenient for business or shopping trips. And what comfortable travel in these new buses! Air-suspension “springs” . . . deep, reclining seats

. . . cooled, constantly conditioned air. Trailways drivers are unexcelled in their record for safety . . . noted for their courtesy. Next time, go Trailways, and you'll see why it's known as the “Route of Southern Hospitality”.



Three Thru-Liners  
Daily to Dallas, Texas



Three Thru-Liners  
Daily to Norfolk, Va.



Three Thru Trips  
Daily to Columbia



Six Thru Trips  
Daily to Charlotte, N. C.



Six Trips Daily to  
New York City  
(Two Thru-Liners)



Six Trips Daily to  
Atlanta, Ga.  
(Six Thru-Liners)



For Charter of Schedule  
Information Call Your

**TRAILWAYS  
AGENT**

Phone CANal 40921  
**ANDERSON, S. C.**



# **CAROLINA SCENIC STAGES**

**SPARTANBURG, SOUTH CAROLINA      TELEPHONE 5631**

HAMISH TURNER (Clemson Class of '29) President



**TRAILWAYS**

*the route  
of the*

**THRU-LINERS**



What makes  
a Lucky  
taste better?

**"IT'S TOASTED"**  
to taste better!

**LUCKIES TASTE BETTER**

CLEANER,  
FRESHER,  
SMOOTHER!

COPR. THE AMERICAN TOBACCO COMPANY

